

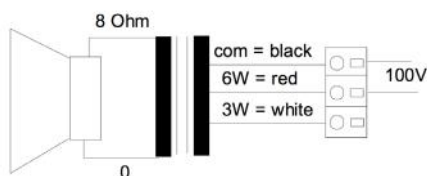
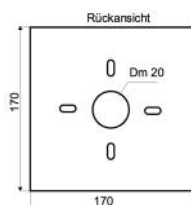
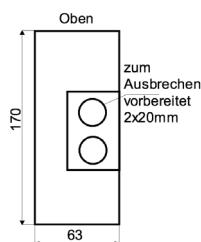
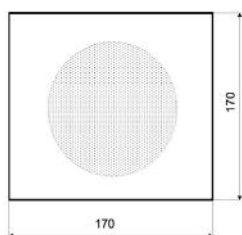
WLQ-170F/EN5424

EN 54-24 On-Wall / On-Ceiling-Speaker
in Metal with 6 Watt Power

EN
54-24



optionally available:
**Multiple entry including
strain relief**



TECHNICAL DATA

WLQ-170F/EN5424

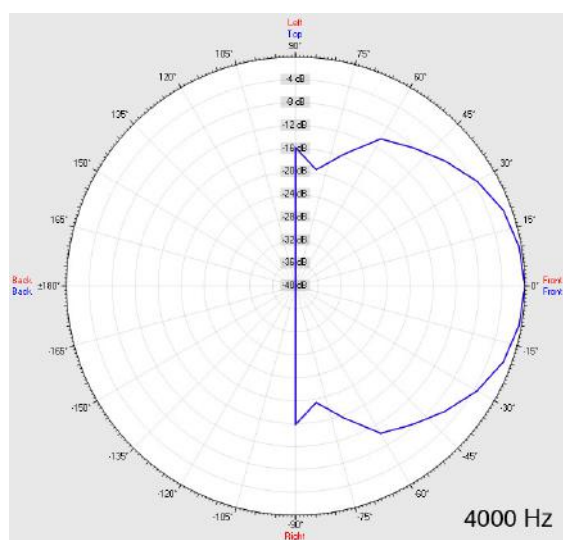
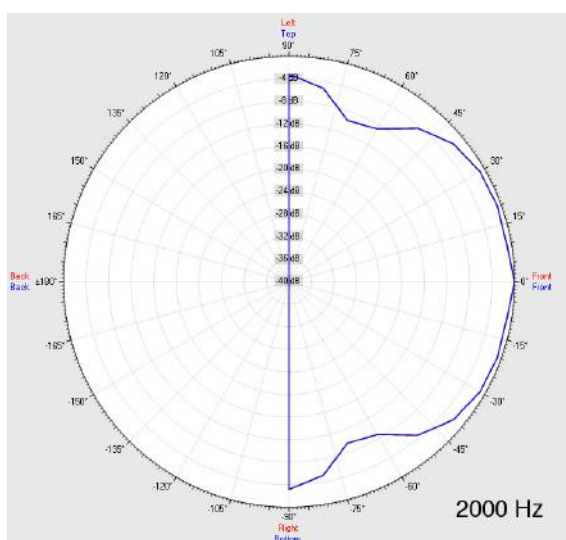
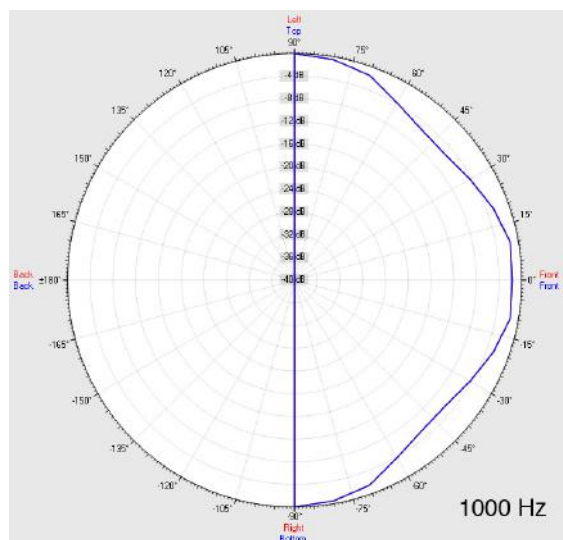
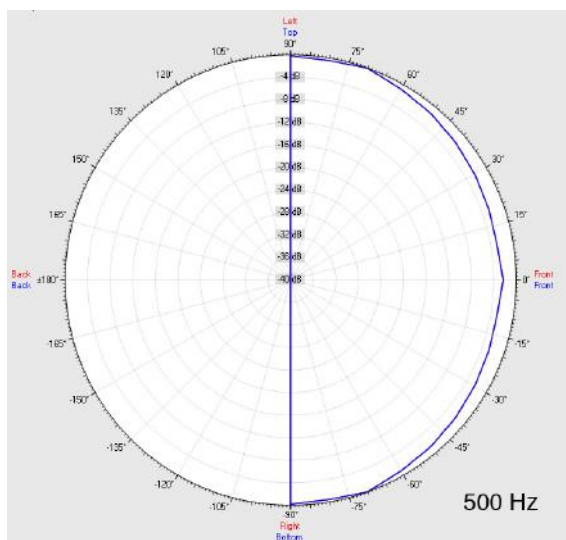
Loudspeaker:	125 mm - broadband
Power-Consumption:	100V-6-3W
Frequency-Range:	100-16 000 Hz
EN-Sensitivity 1W/4M:	77 dB
SPL max 6W/4M:	86,5 dB
SPL 1W/1M max. EASE/Ulysses:	97 dB (1,5 kHz)
SPL 6W/1M max. EASE/Ulysses:	104 dB (1,5 kHz)
Radiation H (0,5/1/2/4KHz):	180°/180°/111°/117°
Radiation V (0,5/1/2/4KHz):	180°/180°/111°/117°
Dimension:	170 x 170 x 63 mm
Weight:	1,32 kg
Material:	Metal
Color:	white
Certificate-Nr.:	1293-CPR-0627
Order-Nr.:	WLQ-170F/EN5424

- Ball-attack protection through 2 x 1,25mm Steel
- Vandalism-optimized with rear-panel
- 2 x pre-embossing for PG-connectors
- Two touch-secure 100V-tappings with ceramic clamp
- Ball-attack protection according DIN 18032-3 by request
- Thermal fuse by request
- Optional multiple entry including strain relief available

WLQ-170F/EN5424

EN 54-24 On-Wall / On-Ceiling-Speaker
in Metal with 6 Watt Power

Radiation



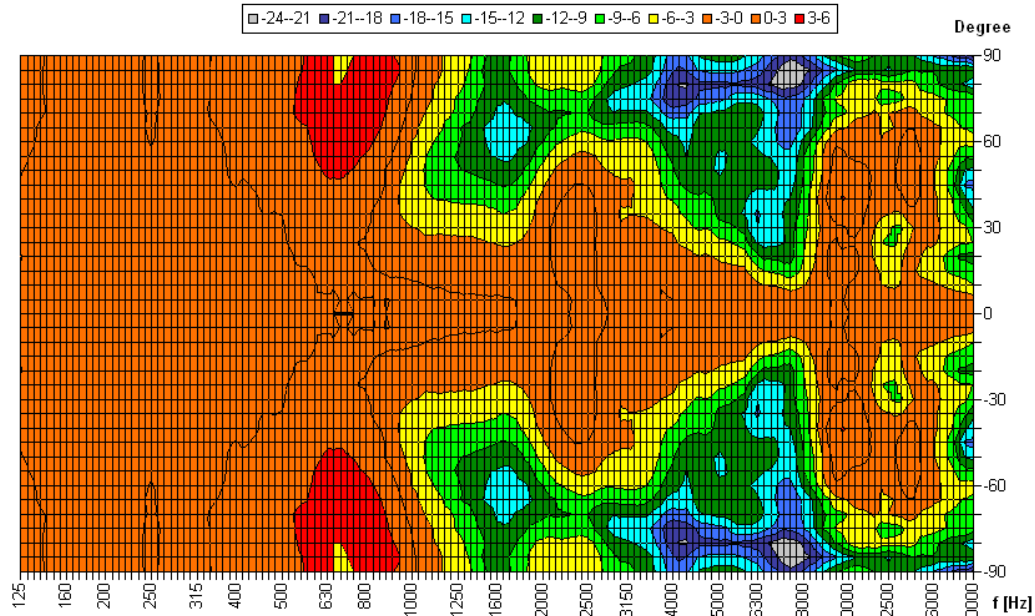
Test method	Axis	500 Hz	1000 Hz	2000 Hz	4000 Hz
EN 54-24	HOR	180°	180°	111°	117°
EN 54-24	VER	180°	180°	111°	117°
EASE/Ulysses	HOR	180°	180°	110°	80°
EASE/Ulysses	VER	180°	180°	110°	80°

WLQ-170F/EN5424

EN 54-24 On-Wall / On-Ceiling-Speaker
in Metal with 6 Watt Power

Isobar-diagram

Horizontal Isobars of: Elko-Schmid WLQ-170F



Parameters: Cyclic Move: 0° ; Symmetry: 0..+180 sym ; Freq.Smooth: 1/3 Oct ; Ang.Resol.: 5° ; Rel. to: 0° Axis 0°

CE

1293

Elko Schmid GmbH & Co. KG
Glauchauer Str. 30, D-08058 Zwickau

12

DoP: 498058129314-OWS-PN-0015

EN 54-24

Loudspeaker for voice alarm systems for
fire detection and fire alarm systems for buildings

WLQ-170F/EN5424

Intended Option:
Type A