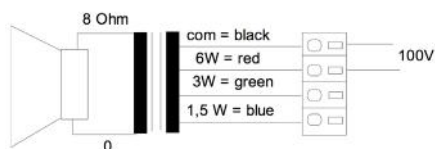
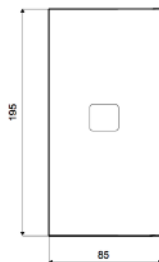
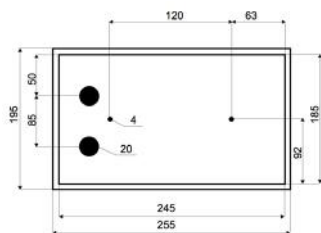
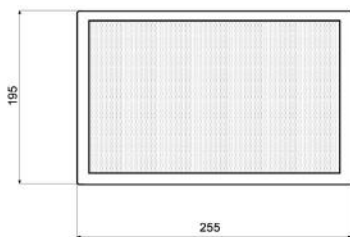
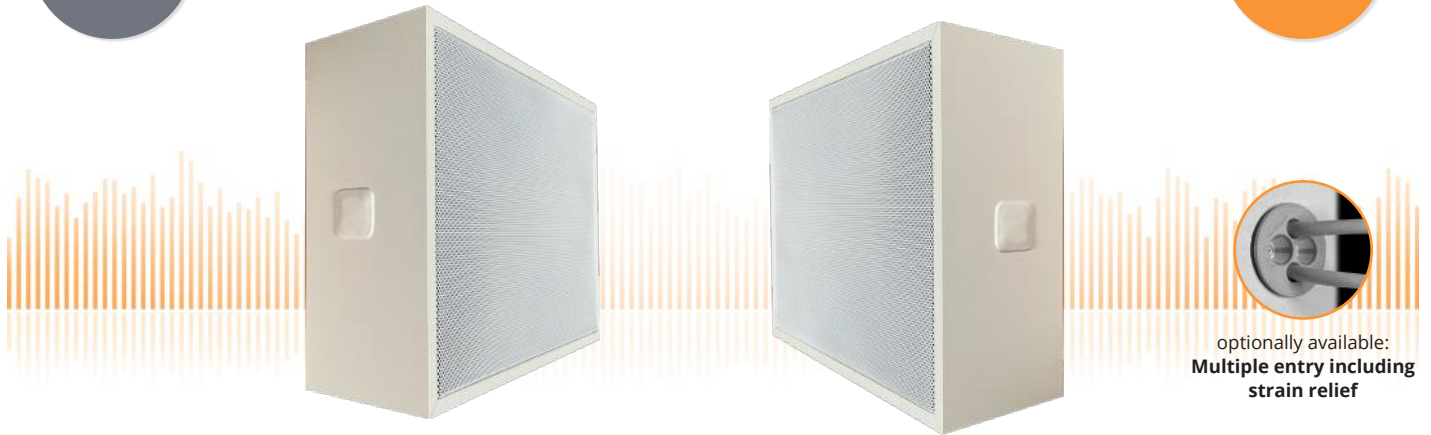


# WHL-250T/EN5424

EN 54-24 Wall / On-Ceiling - Speaker  
in MDF with 6 Watt Power

EN  
54-24

VERSION  
„MARKANT“



## TECHNICAL DATA

## WHL-250T/EN5424

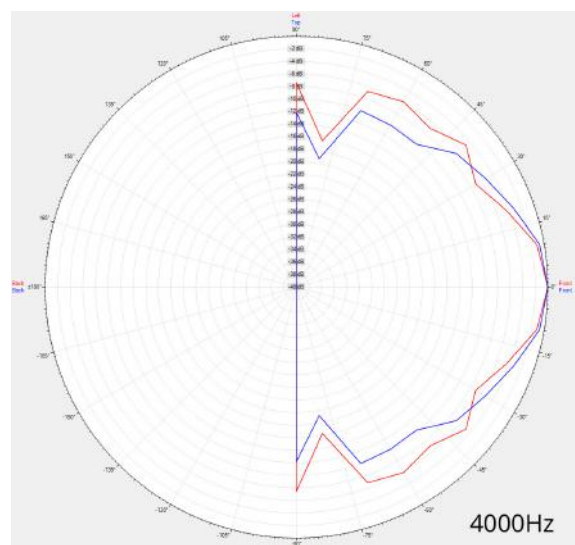
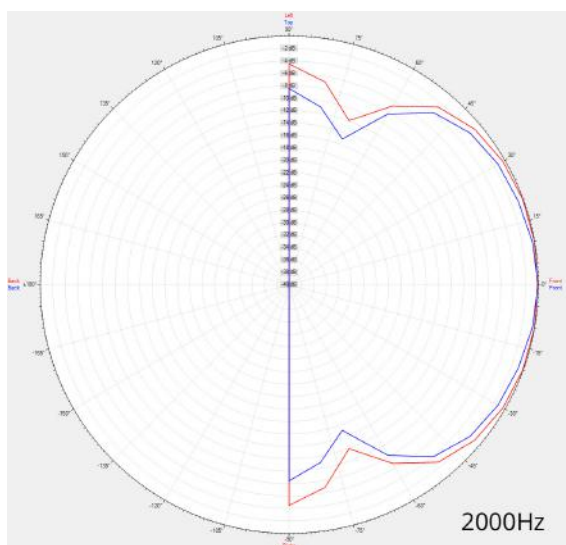
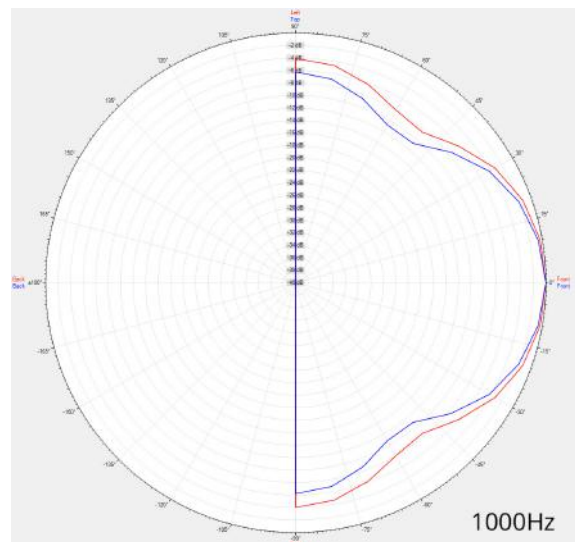
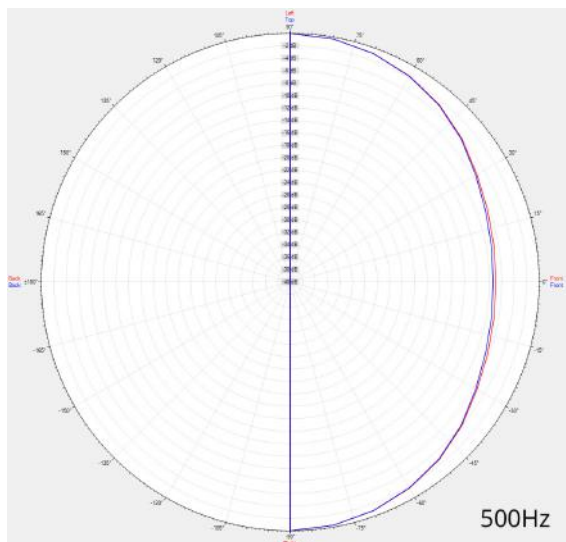
Loudspeaker:	165mm - broadband
Power-Consumption:	100V-6-3-1,5W
Frequency-Range:	100-18 000 Hz
EN-Sensitivity 1W/4M:	79 dB
SPL max 6W/4M:	86,5 dB
SPL 1W/1M max. EASE/Ulysses:	99 dB
SPL 6W/1M max. EASE/Ulysses:	105 dB
Radiation H (0,5/1/2/4KHz):	180°/160°/125°/105°
Radiation V (0,5/1/2/4KHz):	180°/175°/95°/70°
Dimension:	255 x 195 x 85 mm
Weight:	1,8 kg
Material:	MDF / Metal-Grill
Color:	white
Certificate-Nr.:	1293-CPR-0905
Order-Nr.:	WHL-250T/EN5424-WH

- Version "Markant" with clear line structure
- Mounting through Quick-Snap-Real-Panel / Safety-Screws
- Touch-secure 100V-tappings
- Ceramic clamp & thermal fuse by request
- Optional multiple entry including strain relief available

# WHL-250T/EN5424

EN 54-24 Wall / On-Ceiling - Speaker  
in MDF with 6 Watt Power

## Radiation



Testmethod	Axis	500 Hz	1000 Hz	2000 Hz	4000 Hz
EN 54-24	HOR	180°	160°	125°	105°
EN 54-24	VER	180°	175°	95°	70°
EASE/Ulysses	HOR	180°	150°	180°	180°
EASE/Ulysses	VER	180°	180°	110°	70°

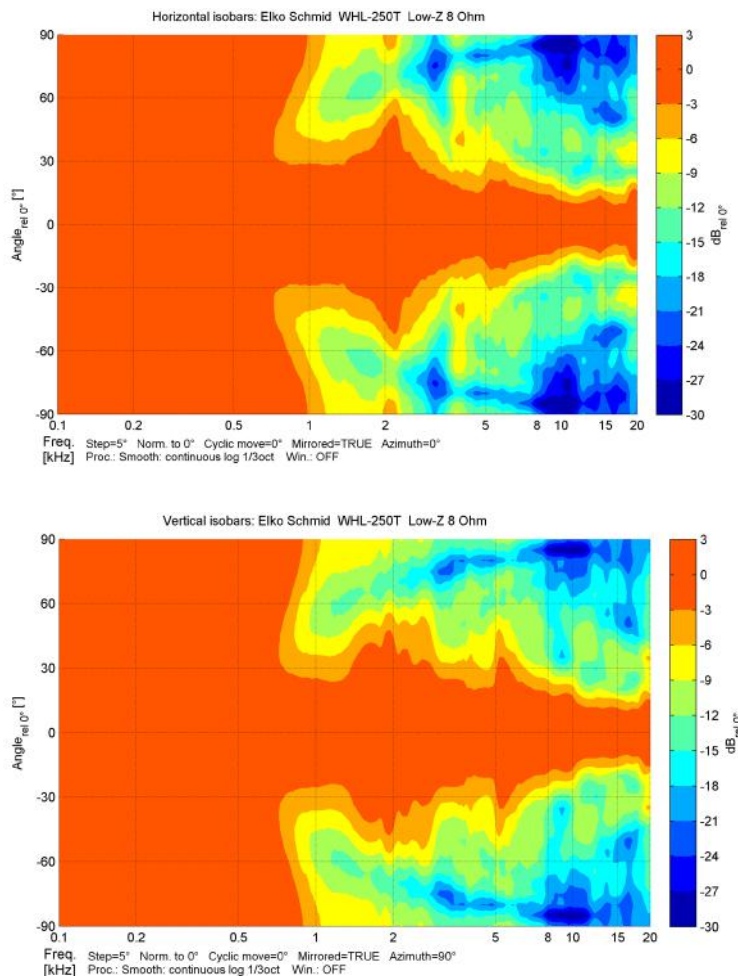
# WHL-250T/EN5424

EN 54-24 Wall / On-Ceiling - Speaker  
in MDF with 6 Watt Power



Elektroakustische Komponenten

## Isobar-Diagramm



1293

Elko Schmid GmbH & Co. KG  
Glauchauer Str. 30, D-08058 Zwickau

w4

DoP: 498058129314-OWS-PN-0025

EN 54-24

Loudspeaker for voice alarm systems for  
fire detection and fire alarm systems for buildings

WHL-250T/EN5424

Intended Option:  
Type A