

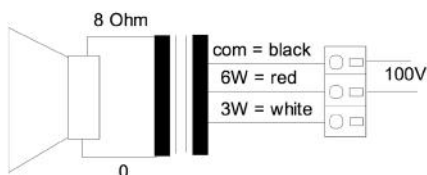
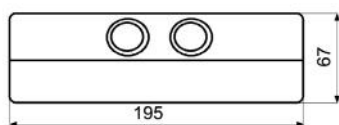
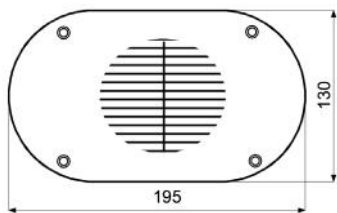
WAVE-100T/EN5424

EN 54-24 Wall / On-Ceiling - Speaker
in ABS with 6 Watt Power for Wet-Room Application

EN
54-24



optionally available:
**Multiple entry including
strain relief**



TECHNICAL DATA

WAVE-100T/EN5424

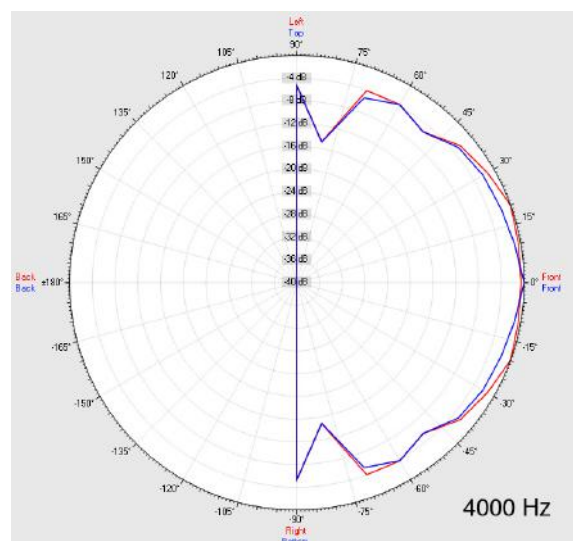
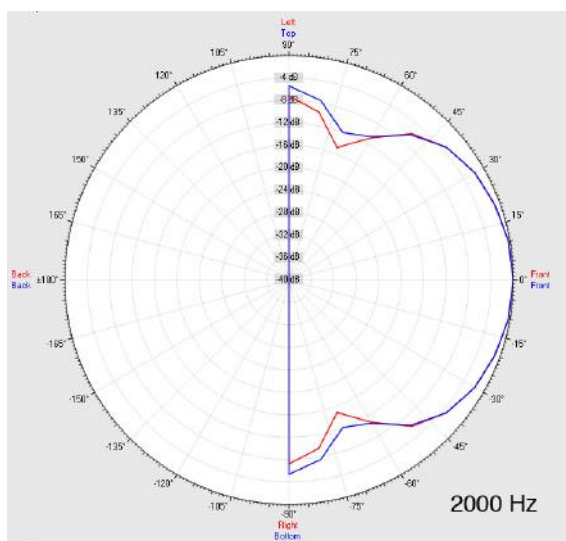
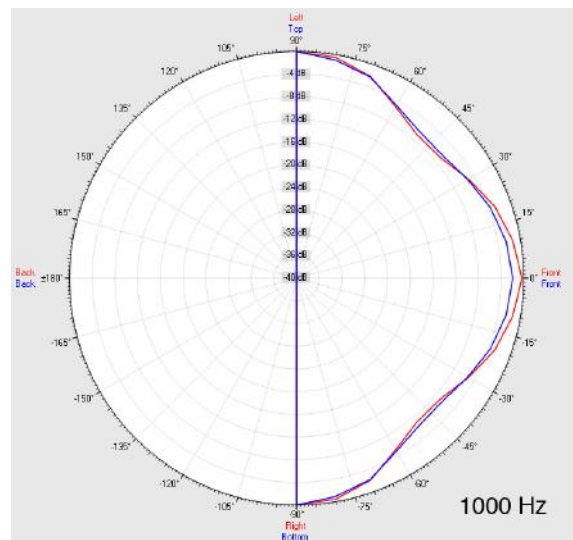
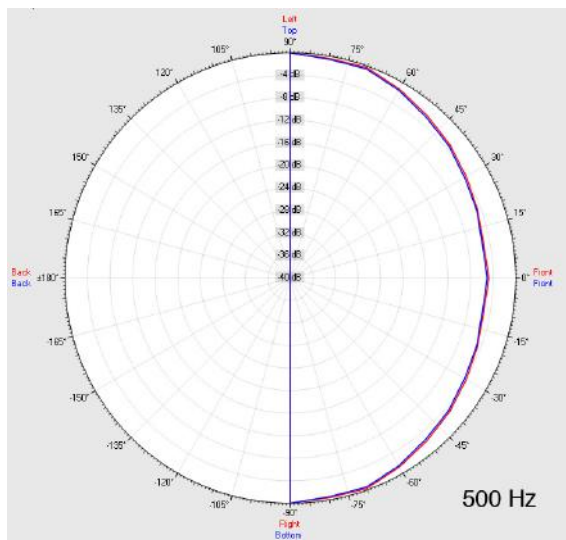
Loudspeaker:	120mm - broadband
Power-Consumption:	100V-6-3W
Frequency-Range:	110-15 000 Hz
EN-Sensitivity 1W/4M:	76 dB
SPL max 6W/4M:	84 dB
SPL 1W/1M max. EASE/Ulysses:	96 dB (1,5/3,5 kHz)
SPL 6W/1M max. EASE/Ulysses:	103 dB (1,5/3,5 kHz)
Radiation H (0,5/1/2/4KHz):	180°/180°/112°/72°
Radiation V (0,5/1/2/4KHz):	180°/180°/112°/72°
EN degree:	EN Type B, weather-proof, outdoor-certificated
Dimension:	195 x 130 x 67 mm
Weight:	0,7 kg
Material:	ABS
Color:	grey-white
Certificate-Nr.:	1293-CPD-0382
Order-Nr.:	WAVE-100T/EN5424

- Optimized for baths, steam baths, ships & large kitchens
- Steam-proof and splash-proof for areas with high humidity
- Flame retardant material acc. to EN 60695-11-20, 5VB
- Three PG-Embossings (2x lateral / 1x back wall)
- Humidity-gaskets inside enclosure and on the backside
- Special coated speaker
- Two touch-secure 100V-tappings
- Ceramic clamp & thermal fuse by request
- Optional multiple entry including strain relief available

WAVE-100T/EN5424

EN 54-24 Wall / On-Ceiling - Speaker
in ABS with 6 Watt Power for Wet-Room Application

Radiation



Test method	Axis	500 Hz	1000 Hz	2000 Hz	4000 Hz
EN 54-24	HOR	180°	180°	112°	72°
EN 54-24	VER	180°	180°	112°	72°
EASE/Ulysses	HOR	180°	180°	100°	80°
EASE/Ulysses	VER	180°	180°	100°	80°

WAVE-100T/EN5424

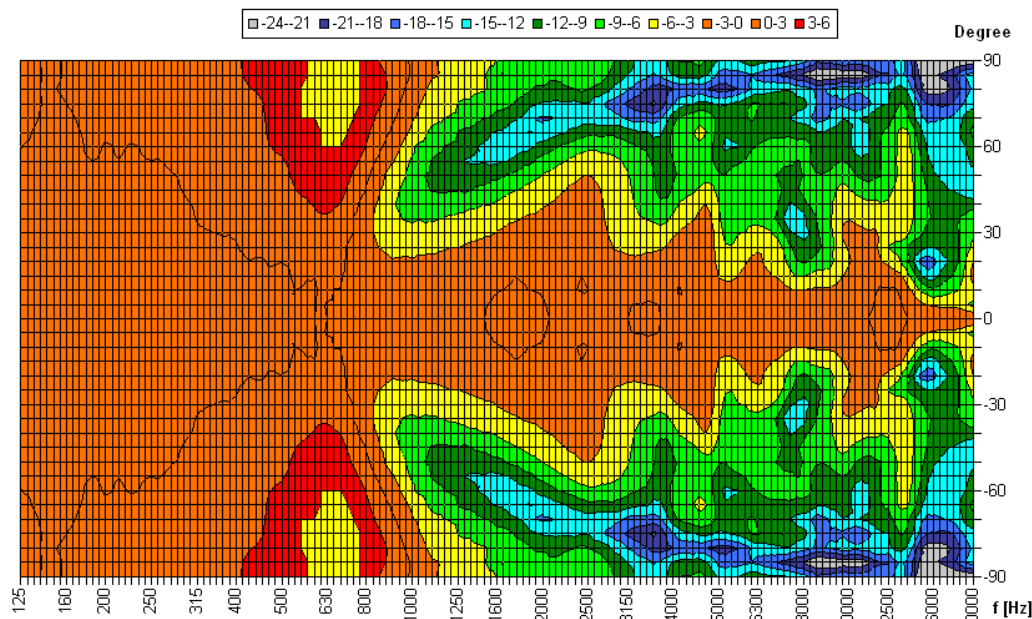
EN 54-24 Wall / On-Ceiling - Speaker
in ABS with 6 Watt Power for Wet-Room Application



Elektroakustische Komponenten

Isobar-Diagramm

Horizontal Isobars of: Elko-Schmid Wave-100T



Parameters: Cyclic Move: 0° ; Symmetry: 0..+180 sym ; Freq.Smooth: 1/3 Oct ; Ang.Resol.: 5° ; Rel. to: 0° Axis 0°

CE

1293

Elko Schmid GmbH & Co. KG
Glauchauer Str. 30, D-08058 Zwickau

13

DoP: 498058129314-OWS-PN-0024

EN 54-24

Loudspeaker for voice alarm systems for
fire detection and fire alarm systems for buildings

WAVE-100T/EN5424

Intended Option:
Type B