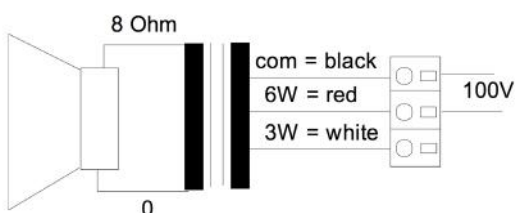
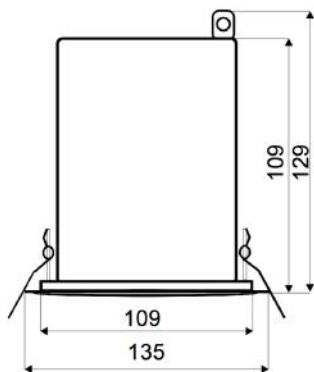
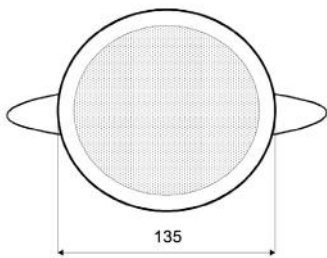


# SMALL-135FT/EN5424

EN 54-24 Ceiling-Speaker  
in Metal with 6 Watt Power

EN  
54-24



## TECHNICAL DATA

## SMALL-135FT/EN5424

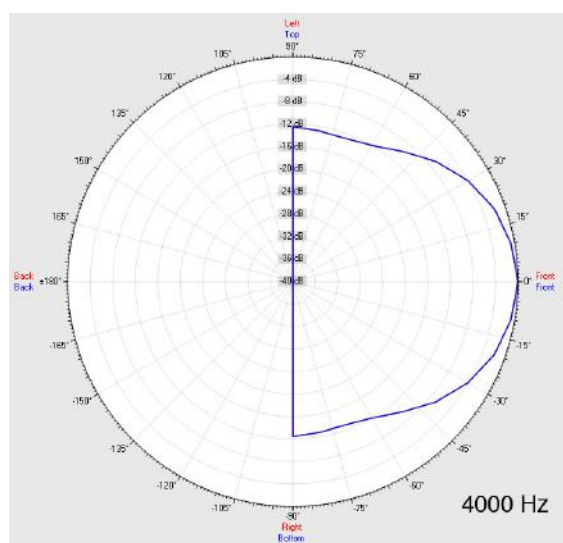
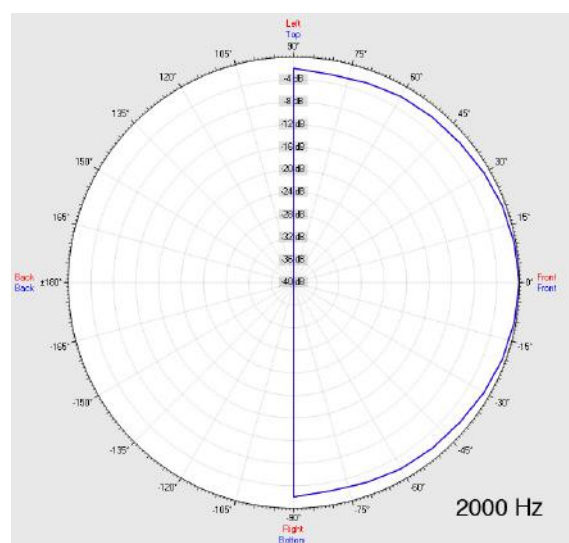
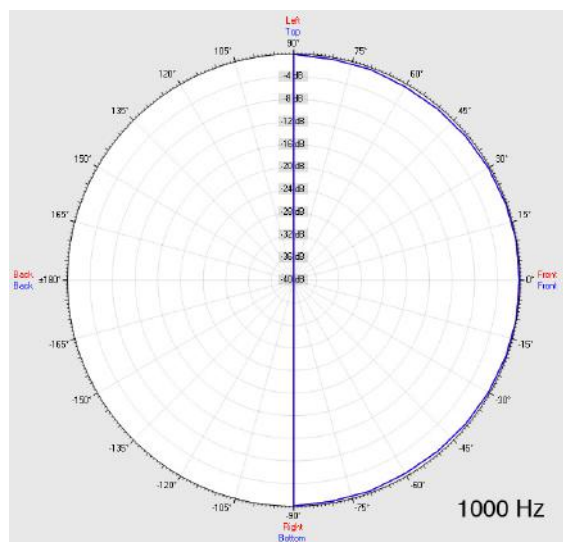
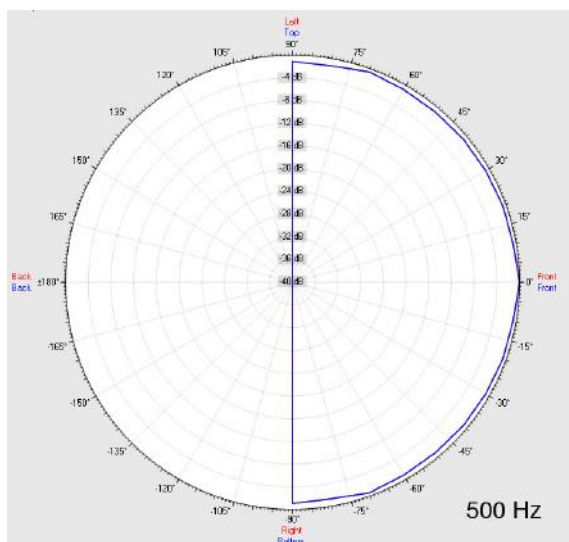
Loudspeaker:	120 mm - broadband
Power-Consumption:	100V-6-3W
Frequency-Range:	85-18 000 Hz
EN-Sensitivity 1W/4M:	75 dB
SPL max 6W/4M:	84 dB
SPL 1W/1M max. EASE/Ulysses:	92 dB (4kHz)
SPL 6W/1M max. EASE/Ulysses:	99,5 dB (4kHz)
Radiation H (0,5/1/2/4KHz):	180°/180°/159°/61°
Radiation V (0,5/1/2/4KHz):	180°/180°/159°/61°
Dimension:	135 (109) mm x 129 mm with firedome
Ceiling Cut-out:	112 mm
Suitable slab thickness:	1 mm - 15 mm
Weight:	0,5 kg
Material:	Metal
Color:	white
Certificate-Nr.:	1293-CPR-0625
Order-Nr.:	SMALL-135FT/EN5424

- Full-Metal-Version
- Fast mounting through Quick-Snap-System
- Two touch-secure 100V-tappings
- Integrated firedome
- Ceramic clamp & thermal fuse by request

# SMALL-135FT/EN5424

EN 54-24 Ceiling-Speaker  
in Metal with 6 Watt Power

## Radiation



Test method	Axis	500 Hz	1000 Hz	2000 Hz	4000 Hz
EN 54-24	HOR	180°	180°	159°	61°
EN 54-24	VER	180°	180°	159°	61°
EASE/Ulysses	HOR	180°	180°	180°	70°
EASE/Ulysses	VER	180°	180°	180°	70°

# SMALL-135FT/EN5424

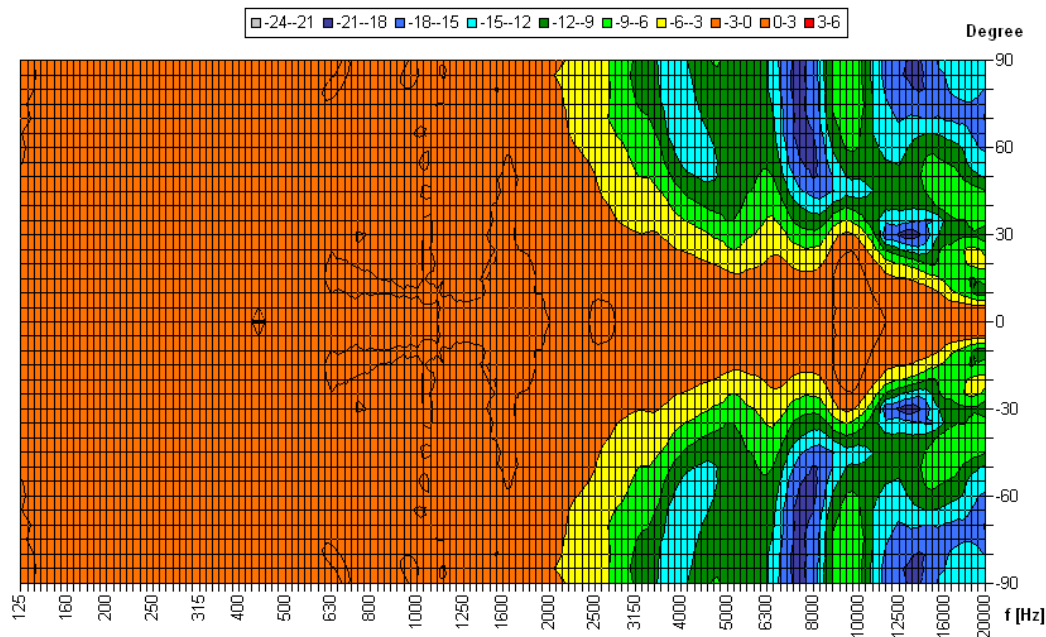
EN 54-24 Ceiling-Speaker  
in Metal with 6 Watt Power



Elektroakustische Komponenten

## Isobar-Diagramm

Horizontal Isobars of: Elko-Schmid SMALL 135 FT



Parameters: Cyclic Move: 0° ; Symmetry: 0..+180 sym ; Freq.Smooth: 1/3 Oct ; Ang.Resol.: 5° ; Rel. to: 0° Axis 0°



1293

Elko Schmid GmbH & Co. KG  
Glauchauer Str. 30, D-08058 Zwickau

13

DoP: 498058129314-ICS-PN-0011

EN 54-24

Loudspeaker for voice alarm systems for  
fire detection and fire alarm systems for buildings

SMALL-135FT/EN5424

Intended Option:  
Type A