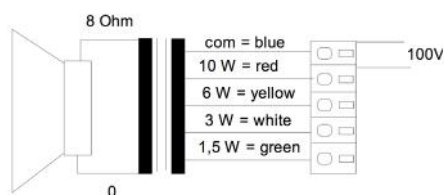
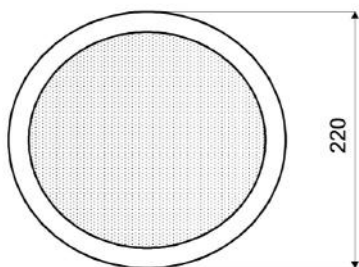
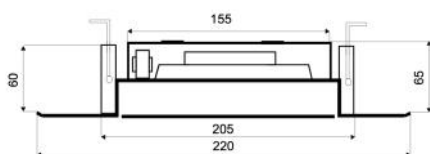
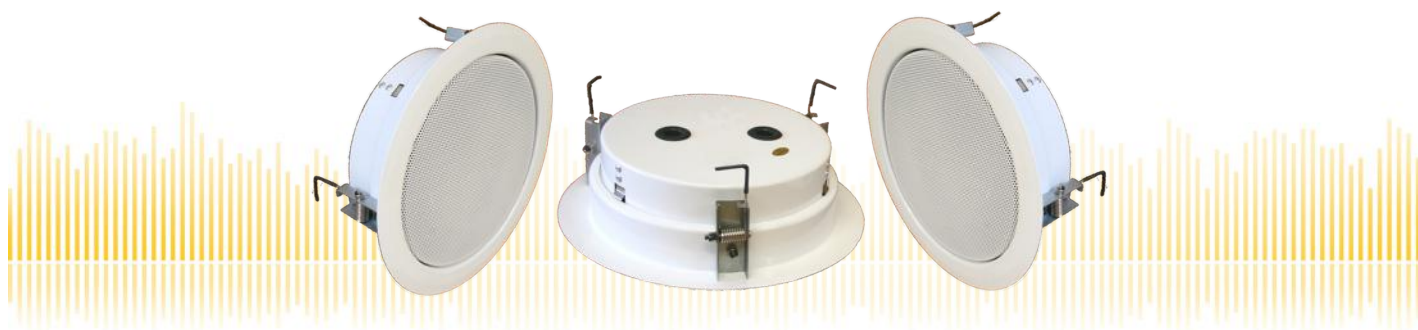


SLB-220-FLAT/EN5424

EN 54-24 Ceiling-Speaker
in Metal with 10 Watt Power

EN
54-24



TECHNICAL DATA

SLB-220-FLAT/EN5424

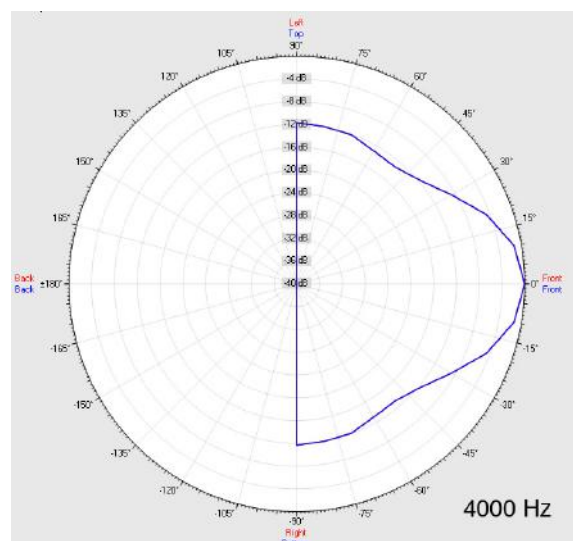
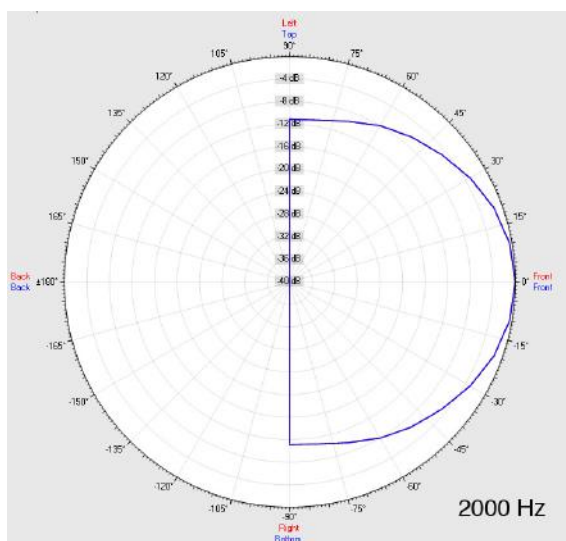
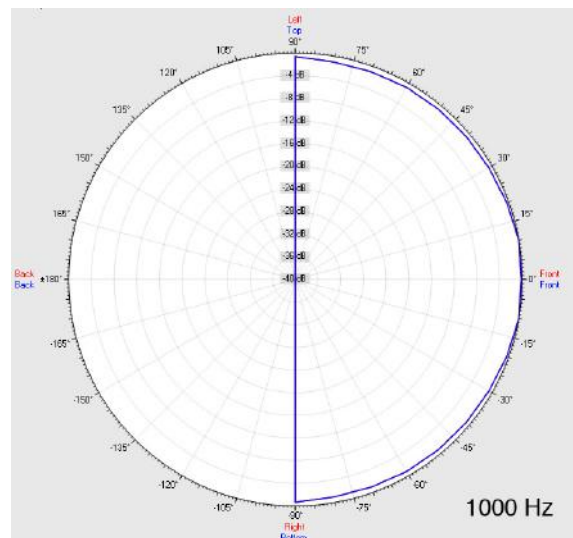
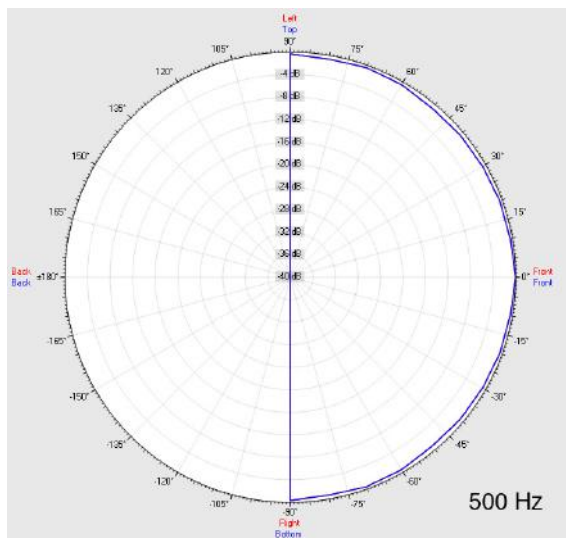
Loudspeaker:	165mm - broadband
Power-Consumption:	100V-10-6-3-1,5W
Frequency-Range:	90-18 000 Hz
EN-Sensitivity 1W/4M:	74 dB
SPL max 10W/4M:	92 dB
SPL 1W/1M max. EASE/Ulysses:	99 dB (3kHz)
SPL 10W/1M max. EASE/Ulysses:	108 dB (3kHz)
Radiation H (0,5/1/2/4kHz):	180°/180°/162°/50°
Radiation V (0,5/1/2/4kHz):	180°/180°/162°/50°
Dimension:	220 mm x 65 mm with fire dome
Ceiling Cut-out:	205 mm
Suitable slab thickness:	1 mm - 30 mm
Weight:	ca. 1,4 kg
Material:	Metal
Color:	white similar to RAL 9010
Certificate-Nr.:	1293-CPR-0427
Order-Nr.:	SLB-220-FLAT/EN5424

- Only 65mm mounting depth incl fire dome
- Two-part design via bayonet mounting
- Four touch-secure 100V-tappings
- Ball-attack protection according DIN 18032-3 included
- Custom colors by request
- Ceramic clamp & thermal fuse by request

SLB-220-FLAT/EN5424

EN 54-24 Ceiling-Speaker
in Metal with 10 Watt Power

Radiation



Test method	Axis	500 Hz	1000 Hz	2000 Hz	4000 Hz
EN 54-24	HOR	180°	180°	162°	50°
EN 54-24	VER	180°	180°	162°	50°
EASE/Ulysses	HOR	180°	180°	90°	45°
EASE/Ulysses	VER	180°	180°	90°	45°

SLB-220-FLAT/EN5424

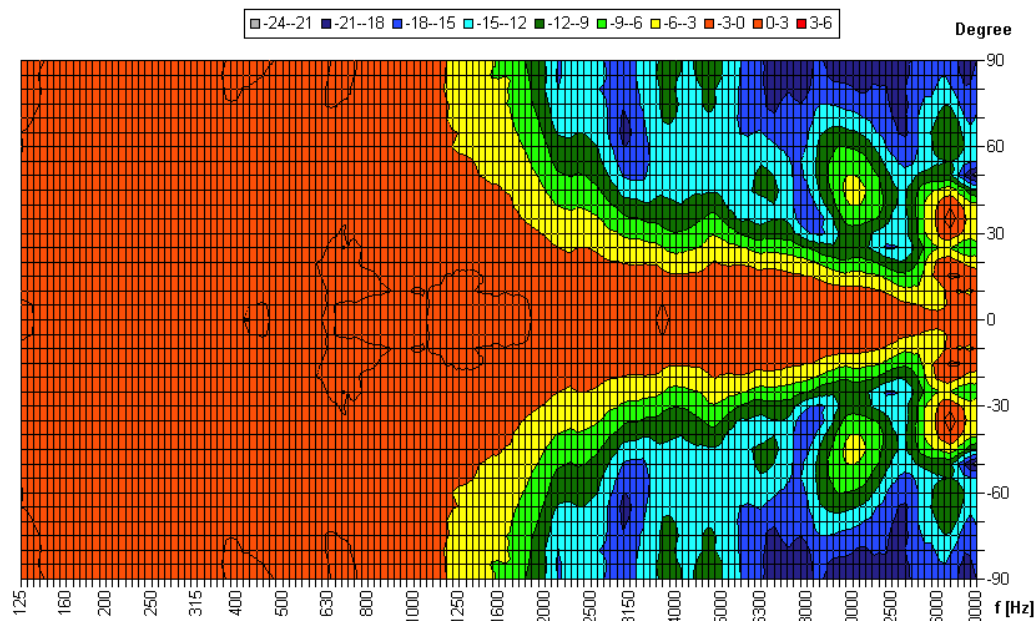
EN 54-24 Ceiling-Speaker
in Metal with 10 Watt Power



Elektroakustische Komponenten

Isobar-Diagramm

Horizontal Isobars of: Elko-Schmid SLB-220



Parameters: Cyclic Move: 0° ; Symmetry: 0..+180 sym ; Freq.Smooth: 1/3 Oct ; Ang.Resol.: 5° ; Rel. to: 0° Axis 0°

CE

1293

Elko Schmid GmbH & Co. KG
Glauchauer Str. 30, D-08058 Zwickau

14

DoP: 498058129314-ICS-PN-0010

EN 54-24

Loudspeaker for voice alarm systems for
fire detection and fire alarm systems for buildings

SLB-220-FLAT/EN5424

Intended Option:
Type A