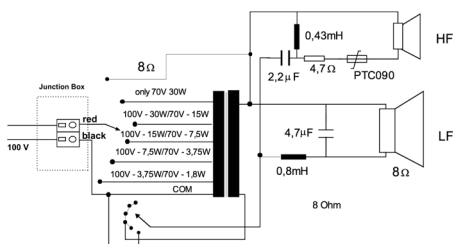
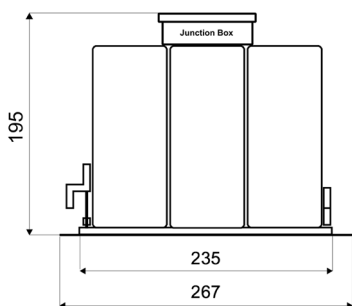
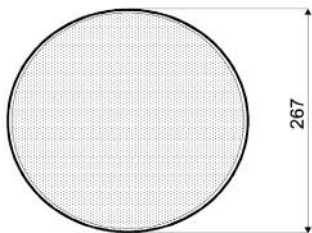


ESL-30T/EN5424

EN 54-24 Ceiling-Speaker
in ABS/Metal with 30 Watt Power and 2-Way-Technology

EN
54-24



TECHNICAL DATA

ESL-30T/EN5424

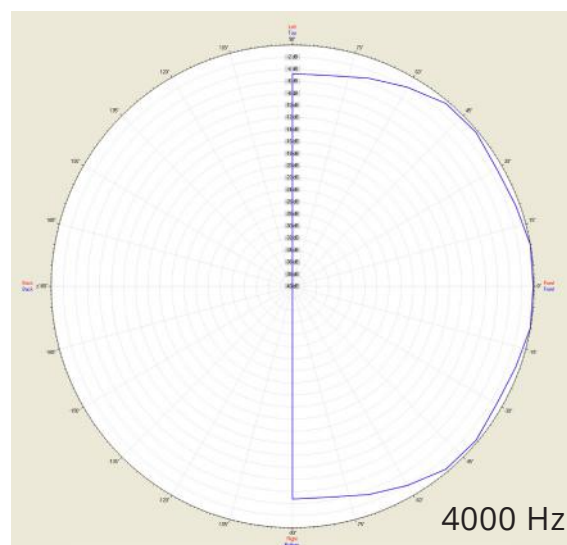
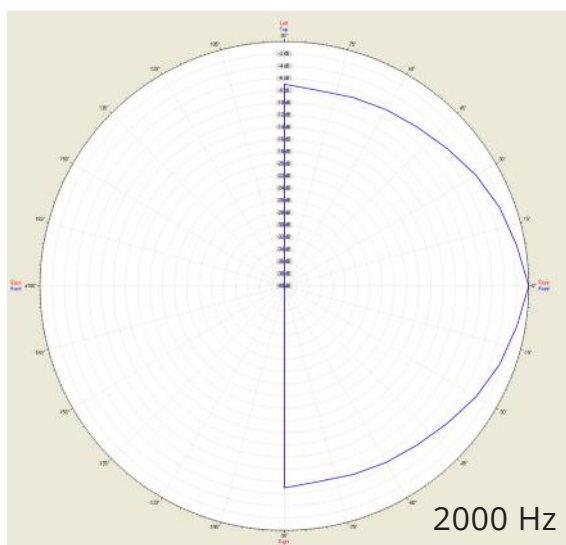
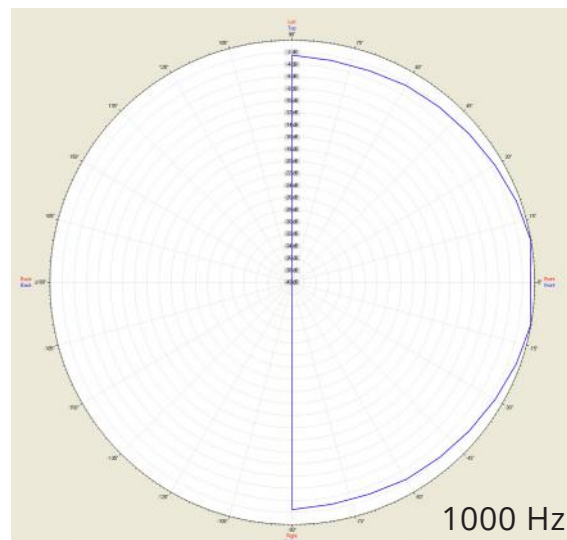
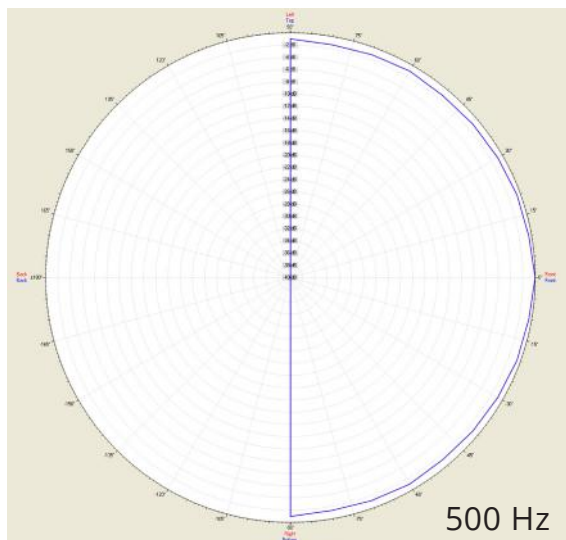
Loudspeaker:	165mm - Coax-Speaker
Power-Consumption:	100V-30-15-7,5-3,75W & 70V & 80hm / 75W
Frequency-Range:	60-20 000 Hz
EN-Sensitivity max 30W/4M:	89 dB
SPL 1W/1M max. EASE/Ulysses:	93 dB (7 kHz)
SPL 30W/1M max. EASE/Ulysses:	108 dB (7 kHz)
Radiation H (0,5/1/2/4kHz):	180°/174°/148°/113°
Radiation V (0,5/1/2/4kHz):	180°/174°/148°/113°
Dimension:	267 mm x 195 mm with firedome
Ceiling Cut-out:	235 mm
Suitable slab thickness:	1 mm - 30 mm
Weight:	2,7 kg with firedome
Material:	Grill+Case: Metal, Ring: ABS-5VB
Color:	white
Certificate-Nr.:	1293-CPR-0599
Order-Nr.:	ESL-30T/EN5424

- Nearly rimless design
- High-End Coaxial System with HF-Horn
- 6,5" - 2-way Coax-Speaker
- High-Class Music Performance suitable Bars, Restaurants, Lounges etc.
- Special-folded Bass-Reflex-Enclosure
- Movable tweeter with crossover at 3450Hz
- Touch-secure 100V/80hm-tappings via rotary-switch
- Custom color by request
- Ceramic clamp & thermal fuse by request

ESL-30T/EN5424

EN 54-24 Ceiling-Speaker
in ABS/Metal with 30 Watt Power and 2-Way-Technology

Radiation



Test method	Axis	500 Hz	1000 Hz	2000 Hz	4000 Hz
EN 54-24	HOR	180°	174°	148°	113°
EN 54-24	VER	180°	174°	148°	113°
EASE/Ulysses	HOR	180°	180°	100°	90°
EASE/Ulysses	VER	180°	180°	100°	90°

ESL-30T/EN5424

EN 54-24 Ceiling-Speaker

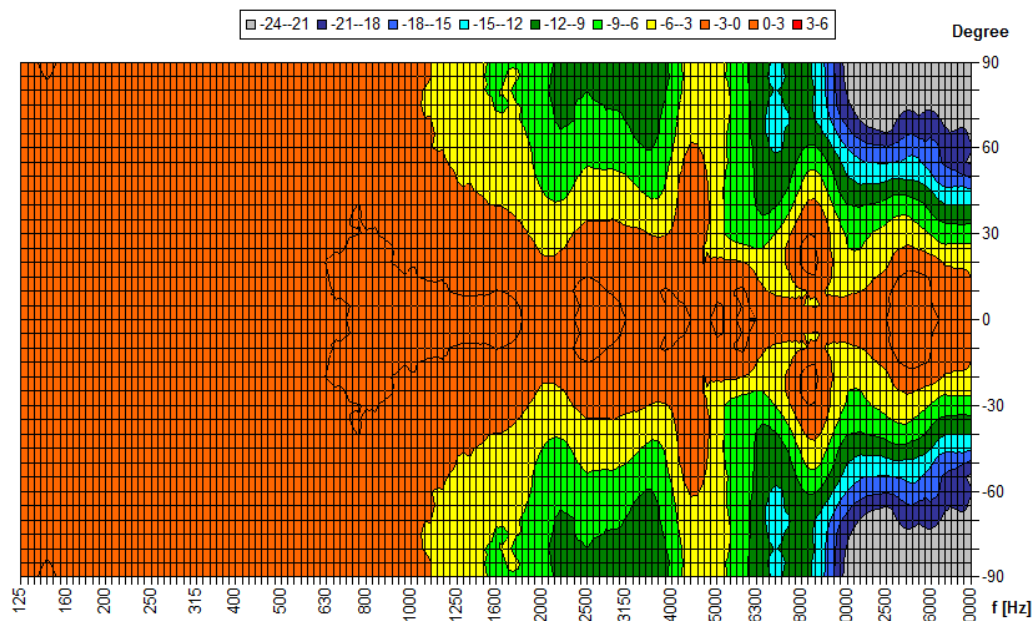
in ABS/Metal with 30 Watt Power and 2-Way-Technology



Elektroakustische Komponenten

Isobar-Diagramm

Horizontal Isobars of: Elko-Schmid ESL-30T



Parameters: Cyclic Move: 0° ; Symmetry: 0..+180 sym ; Freq.Smooth: 1/3 Oct ; Ang.Resol.: 5° ; Rel. to: 0° Axis 0°



1293

ELKO-SCHMID GmbH & Co. KG
Glauchauer Str. 30, D-08058 Zwickau

18

DoP: 498058129314-ICS-PN-0029

EN 54-24

Loudspeaker for voice alarm systems for
fire detection and fire alarm systems for buildings

ESL-30T/EN5424

Intended Option:
Type A