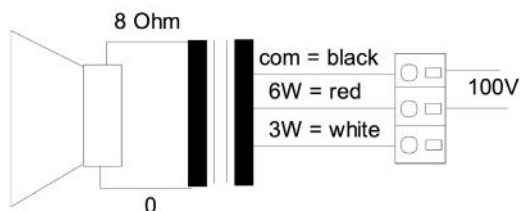
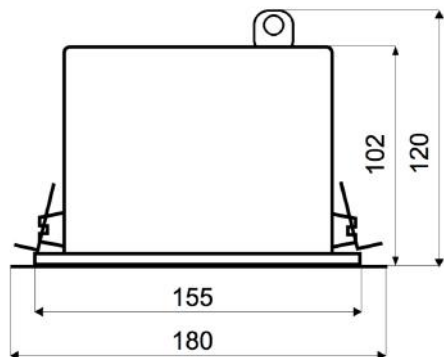


EN-180FT/EN5424

EN 54-24 Ceiling-Speaker
in Metal with 6 Watt Power

EN
54-24



TECHNICAL DATA

EN-180FT/EN5424

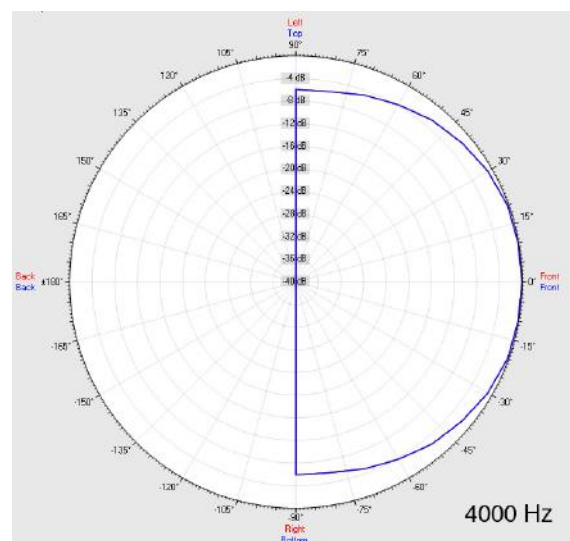
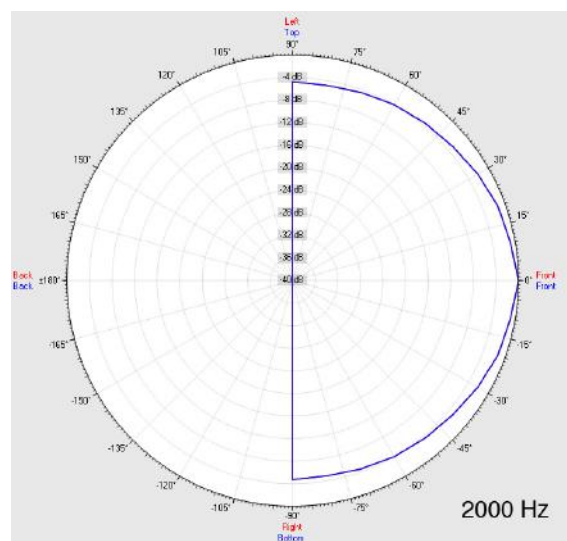
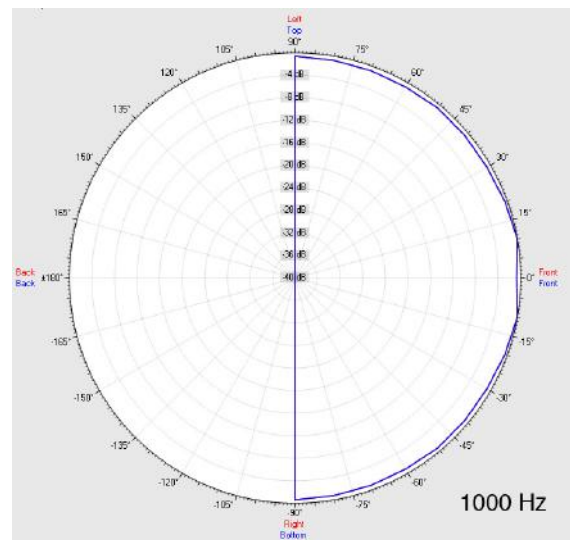
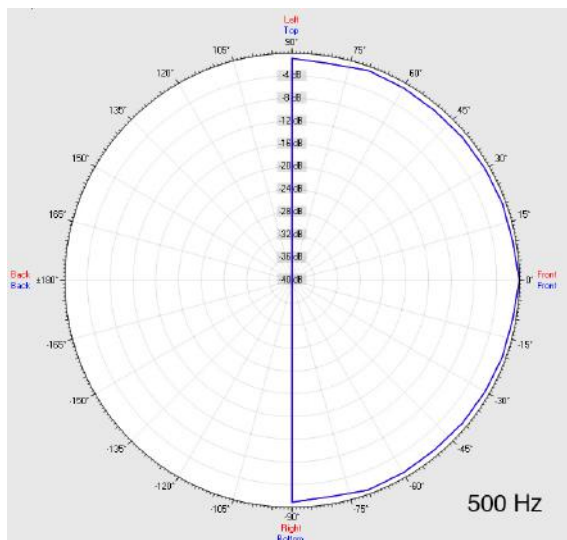
Loudspeaker:	120mm - broadband
Power-Consumption:	100V-6-3W
Frequency-Range:	100-15 000 Hz
EN-Sensitivity 1W/4M:	77 dB
SPL max 6W/4M:	84 dB
SPL 1W/1M max. EASE/Ulysses:	96 dB (2kHz)
SPL 6W/1M max. EASE/Ulysses:	103,5 dB (2kHz)
Radiation H (0,5/1/2/4KHz):	180°/180°/154°/172°
Radiation V (0,5/1/2/4KHz):	180°/180°/154°/172°
Dimension:	180 mm x 120 mm with firedome
Ceiling Cut-out:	155 mm
Suitable slab thickness:	1 mm - 30 mm
Weight:	1 kg
Material:	Metal
Color:	white
Certificate-Nr.:	1293-CPR-0622
Order-Nr.:	EN-180FT/EN5424

- Full Metal Design
- Extremely fast mounting through Double-Leg-Spring-System
- Very wide radiation
- Three touch-secure 100V-tappings
- Integrated firedome and connection panel
- Ceramic clamp & thermal fuse by request

EN-180FT/EN5424

EN 54-24 Ceiling-Speaker
in Metal with 6 Watt Power

Radiation



Test method	Axis	500 Hz	1000 Hz	2000 Hz	4000 Hz
EN 54-24	HOR	180°	180°	154°	172°
EN 54-24	VER	180°	180°	154°	172°
EASE/Ulysses	HOR	180°	180°	180°	180°
EASE/Ulysses	VER	180°	180°	180°	180°

EN-180FT/EN5424

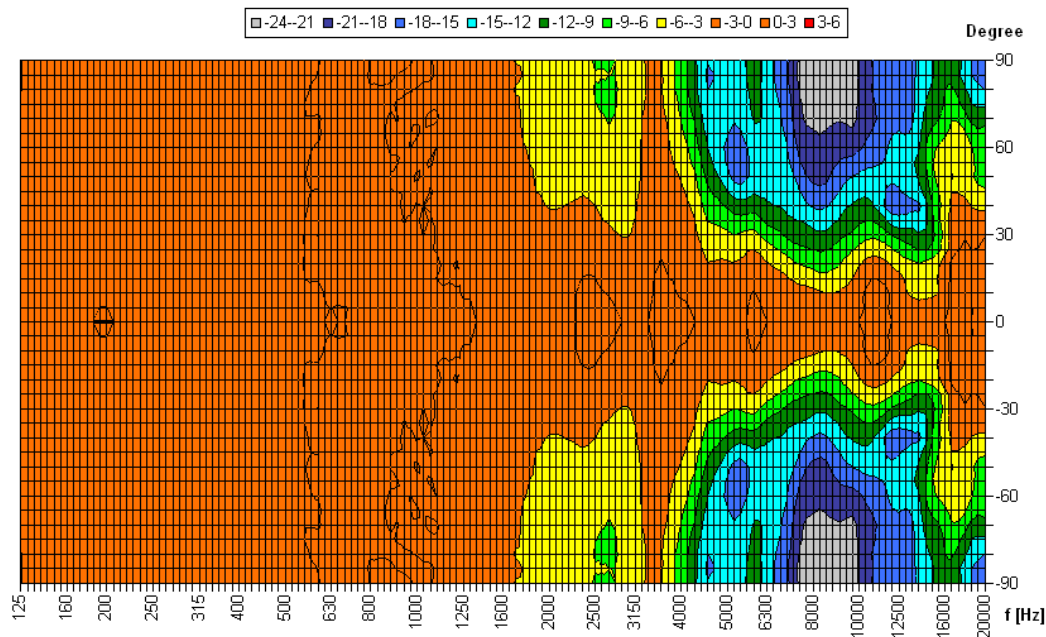
EN 54-24 Ceiling-Speaker
in Metal with 6 Watt Power



Elektroakustische Komponenten

Isobar-Diagramm

Horizontal Isobars of: Elko-Schmid EN-180



Parameters: Cyclic Move: 0° ; Symmetry: 0..+180 sym ; Freq.Smooth: 1/3 Oct ; Ang.Resol.: 5° ; Rel. to: 0° Axis 0°

CE

1293

Elko Schmid GmbH & Co. KG
Glauchauer Str. 30, D-08058 Zwickau

12

DoP: 498058129314-ICS-PN-0004

EN 54-24

Loudspeaker for voice alarm systems for
fire detection and fire alarm systems for buildings

EN-180FT/EN5424

Intended Option:
Type A