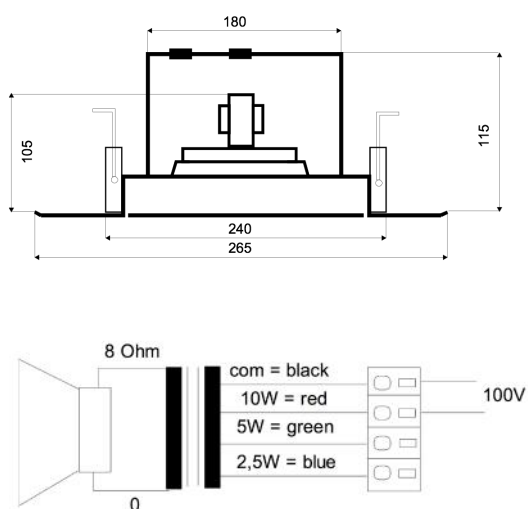
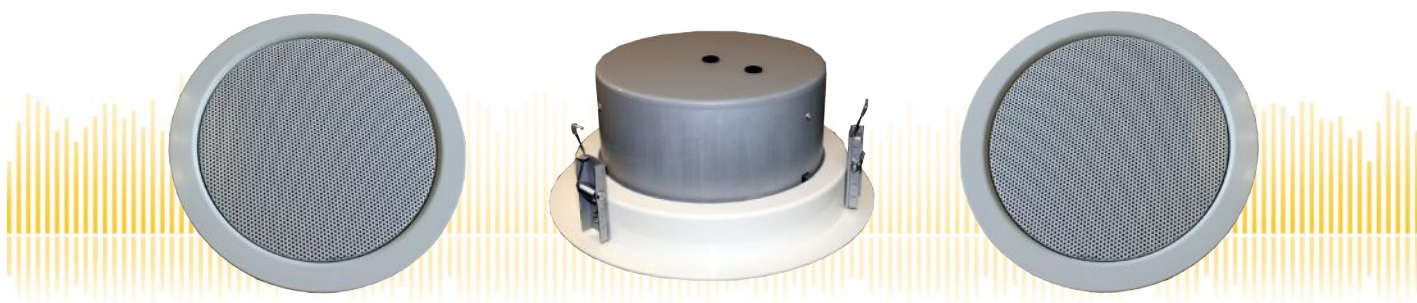


DLS-265FT/10W/EN5424

EN 54-24 Ceiling-Speaker
in Metal with 10 Watt Power

EN
54-24



TECHNICAL DATA

DLS-265FT/10W/EN5424

| | |
|-------------------------------|-------------------------------|
| Loudspeaker: | 8" - broadband with HF-Cone |
| Power-Consumption: | 100V-10-5-2,5W |
| Frequency-Range: | 70-18 000 Hz |
| EN-Sensitivity 1W/4M: | 80 dB |
| SPL max 10W/4M: | 90,7 dB |
| SPL 1W/1M max. EASE/Ulysses: | 104 dB (3,9 kHz) |
| SPL 10W/1M max. EASE/Ulysses: | 113 dB (3,9 kHz) |
| Radiation H (0,5/1/2/4KHz): | 180°/176°/80°/44° |
| Radiation V (0,5/1/2/4KHz): | 180°/176°/80°/44° |
| Dimension: | 265 mm x 115 mm with firedome |
| Ceiling Cut-out: | 240 mm |
| Suitable slab thickness: | 1 mm - 35 mm |
| Weight: | ca. 2,1 kg |
| Material: | Metal |
| Color: | RAL 9010 / opt. RAL Classic |
| Certificate-Nr.: | 1293-CPD-0311 |
| Order-Nr.: | DLS-265FT/10W/EN5424 |

- Two-part design via bayonet mounting
- Three touch-secure 100V-tappings
- Ball-attack protection according DIN 18032-3 included
- Custom colors and wet-room version by request
- Ceramic clamp & thermal fuse by request

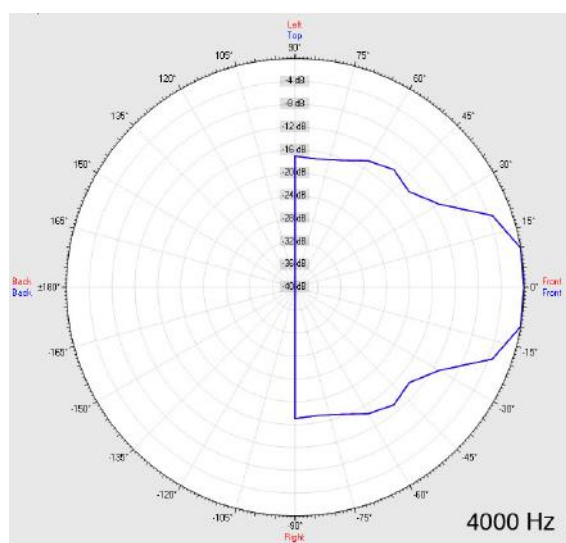
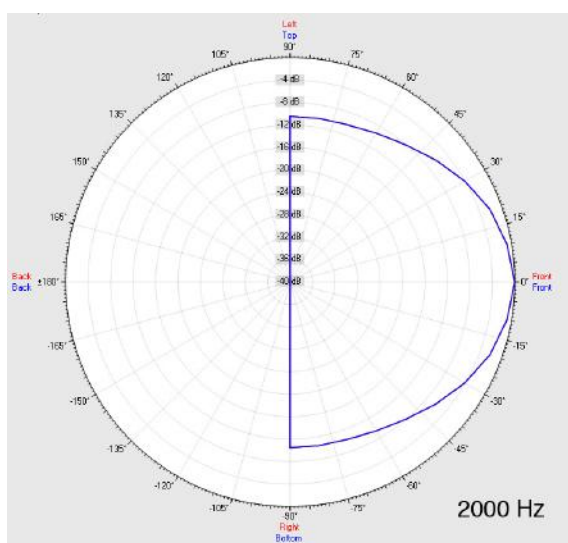
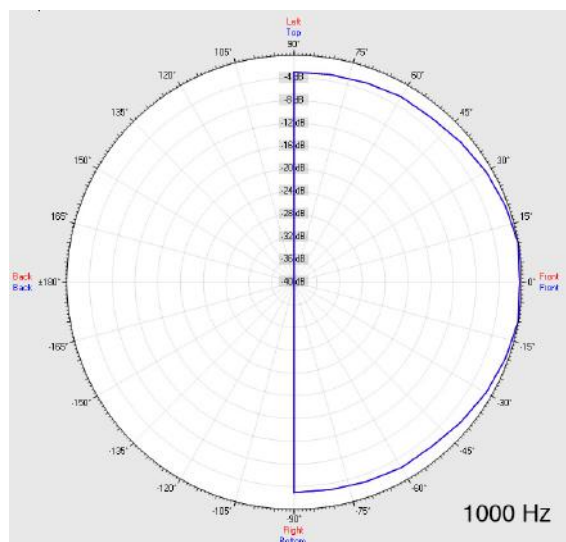
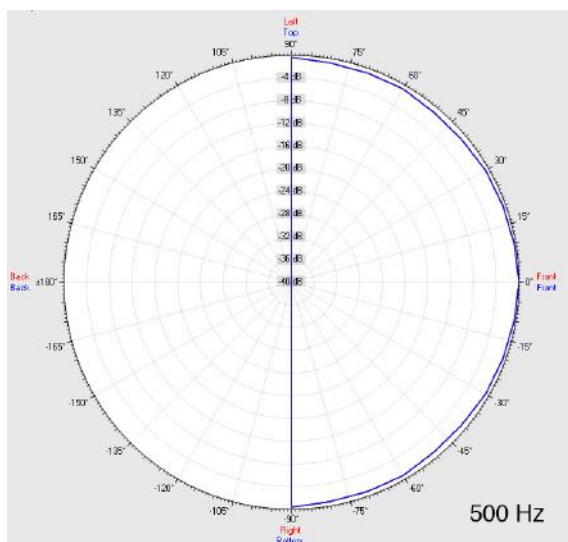
DLS-265FT/10W/EN5424

EN 54-24 Ceiling-Speaker
in Metal with 10 Watt Power



Elektroakustische Komponenten

Radiation



| Test method | Axis | 500 Hz | 1000 Hz | 2000 Hz | 4000 Hz |
|--------------|------|--------|---------|---------|---------|
| EN 54-24 | HOR | 180° | 176° | 80° | 44° |
| EN 54-24 | VER | 180° | 176° | 80° | 44° |
| EASE/Ulysses | HOR | 180° | 180° | 80° | 50° |
| EASE/Ulysses | VER | 180° | 180° | 80° | 50° |

DLS-265FT/10W/EN5424

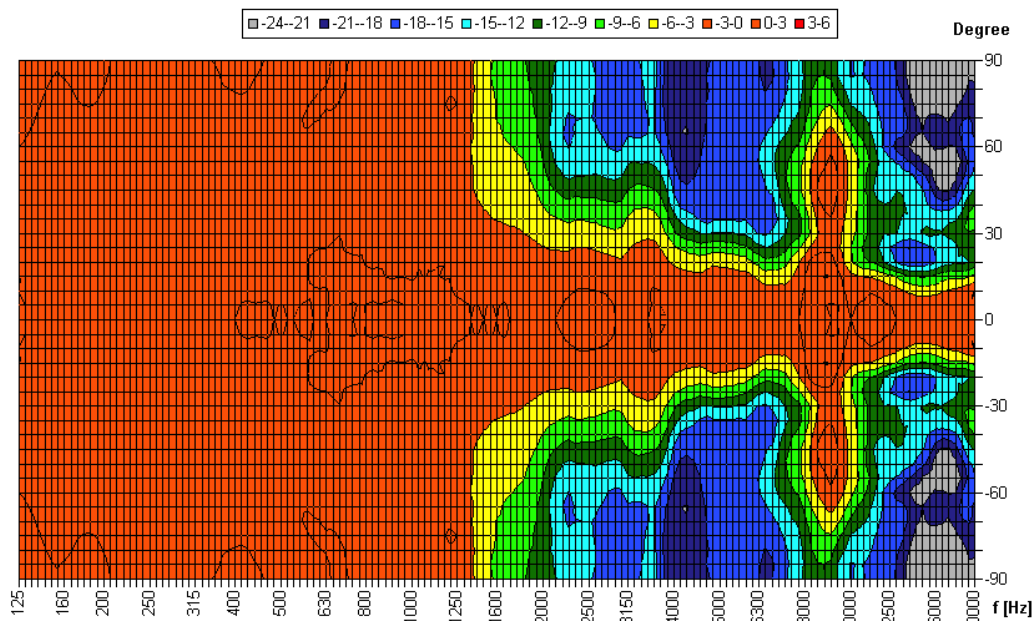
EN 54-24 Ceiling-Speaker
in Metal with 10 Watt Power



Elektroakustische Komponenten

Isobar-Diagramm

Horizontal Isobars of: Elko-Schmid DLS-265F



Parameters: Cyclic Move: 0° ; Symmetry: 0..+180 sym ; Freq.Smooth: 1/3 Oct ; Ang.Resol.: 5° ; Rel. to: 0° Axis 0°

CE

1293

Elko Schmid GmbH & Co. KG
Glauchauer Str. 30, D-08058 Zwickau

12

DoP: 498058129314-ICS-PN-0003

EN 54-24

Loudspeaker for voice alarm systems for
fire detection and fire alarm systems for buildings

DLS-265FT/10W/EN5424

Intended Option:
Type A