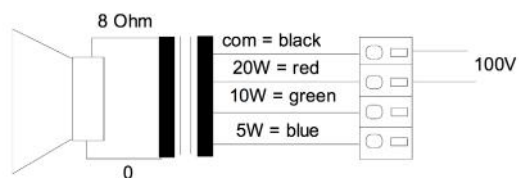
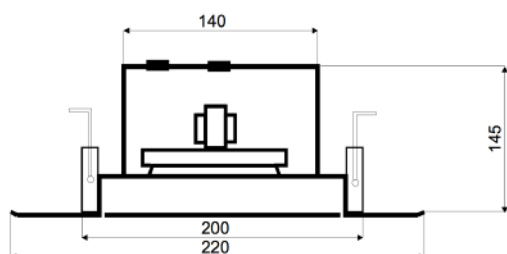


DLS-220FT/20W-II/EN5424

EN 54-24 Ceiling-Speaker

in Metal with 20 Watt Power and 2-Way - Technology

EN
54-24



TECHNICAL DATA

DLS-220FT/20W-II/EN5424

Loudspeaker:	165mm - 2-Way-System
Power-Consumption:	100V-20-10-5W
Frequency-Range:	60-20 000 Hz
EN-Sensitivity 1W/4M:	74,4 dB
SPL max 20W/4M:	88 dB
SPL 1W/1M max. EASE/Ulysses:	99 dB (4 kHz)
SPL 20W/1M max. EASE/Ulysses:	112 dB (4 kHz)
Radiation H (0,5/1/2/4KHz):	180°/180°/122°/44°
Radiation V (0,5/1/2/4KHz):	180°/180°/122°/44°
Dimension:	220 mm x 145 mm with firedome
Ceiling Cut-out:	200 mm
Suitable slab thickness:	1 mm - 35 mm
Weight:	2,3 kg
Material:	Metal
Color:	RAL 9010 / opt. RAL Classic
Certificate-Nr.:	1293-CPR-0621
Order-Nr.:	DLS-220FT/20W-II/EN5424

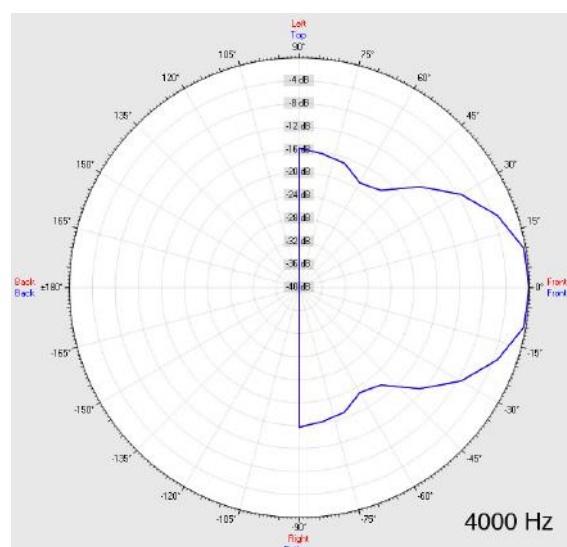
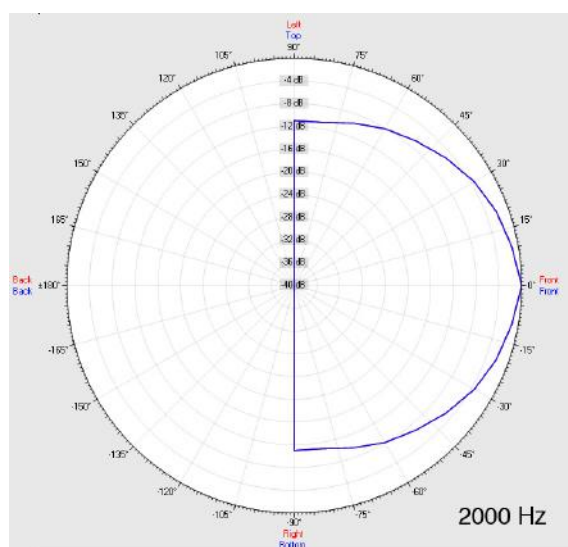
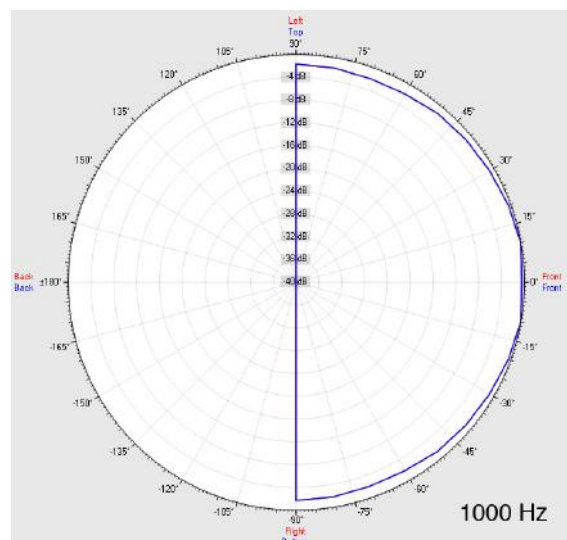
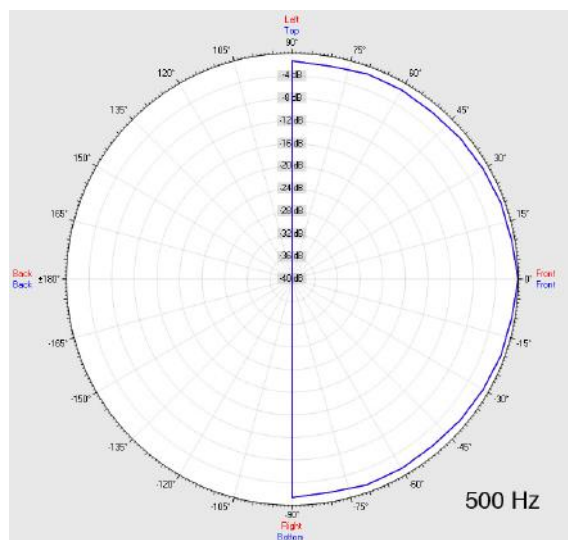
- High-Quality 2-way-system for advanced ELA-applications
- Two-part design via bayonet mounting
- Three touch-secure 100V-tappings
- Ball-attack protection according DIN 18032-3 included
- Custom colors and wet-room version by request
- Ceramic clamp & thermal fuse by request

- For even better music performance we recommend our LOUNGE and ESL models with Bass-Reflex-Enclosure.

DLS-220FT/20W-II/EN5424

EN 54-24 Ceiling-Speaker
in Metal with 20 Watt Power and 2-Way - Technology

Radiation



Test method	Axis	500 Hz	1000 Hz	2000 Hz	4000 Hz
EN 54-24	HOR	180°	180°	122°	44°
EN 54-24	VER	180°	180°	122°	44°
EASE/Ulysses	HOR	180°	180°	90°	55°
EASE/Ulysses	VER	180°	180°	90°	55°

DLS-220FT/20W-II/EN5424

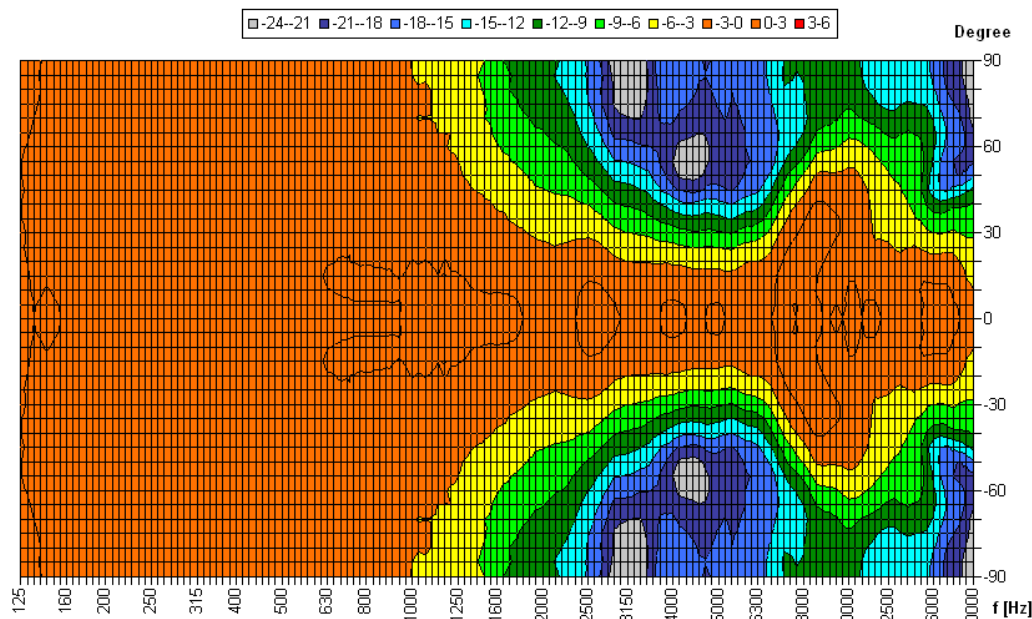
EN 54-24 Ceiling-Speaker
in Metal with 20 Watt Power and 2-Way - Technology



Elektroakustische Komponenten

Isobar-Diagramm

Horizontal Isobars of: Elko-Schmid DLS-220F-20W-II Fire pot



Parameters: Cyclic Move: 0° ; Symmetry: 0..+180 sym ; Freq.Smooth: 1/3 Oct ; Ang.Resol.: 5° ; Rel. to: 0° Axis 0°

CE

1293

Elko Schmid GmbH & Co. KG
Glauchauer Str. 30, D-08058 Zwickau

12

DoP: 498058129314-ICS-PN-0003

EN 54-24

Loudspeaker for voice alarm systems for
fire detection and fire alarm systems for buildings

DLS-220FT/20W-II/EN5424

Intended Option:
Type A