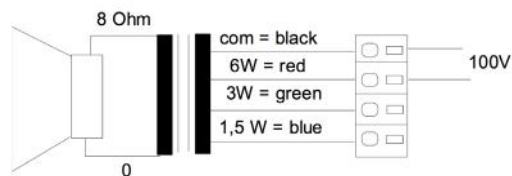
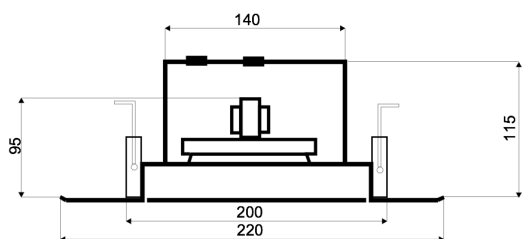


**CLB-220FT/EN5424**

EN 54-24 Ceiling-Speaker  
in Metal with 6 Watt Power



EN  
54-24



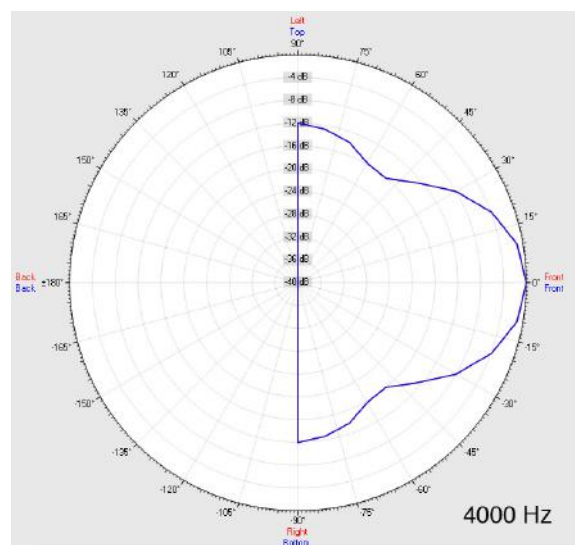
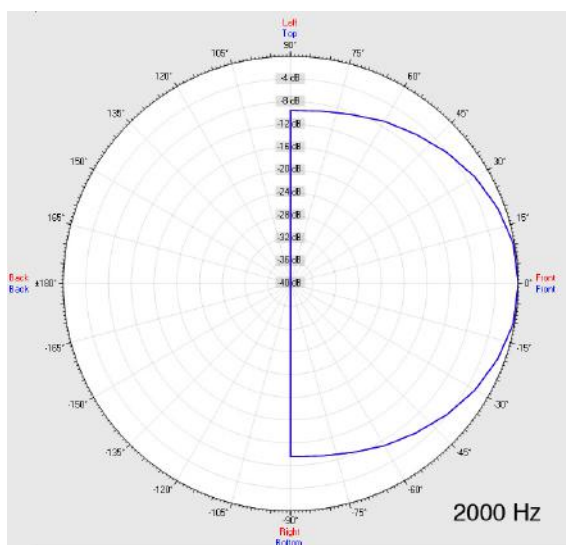
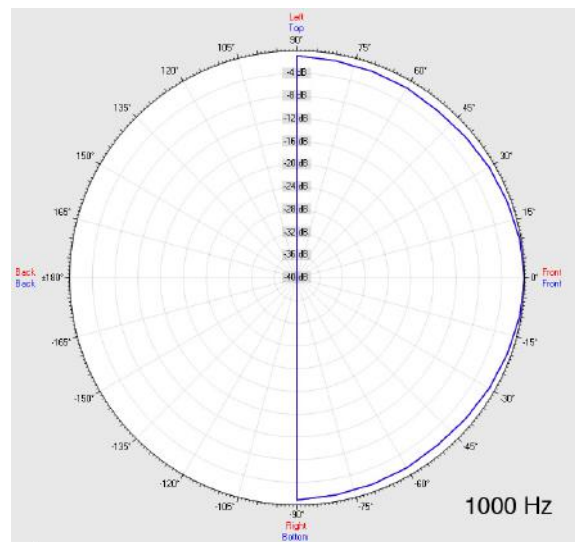
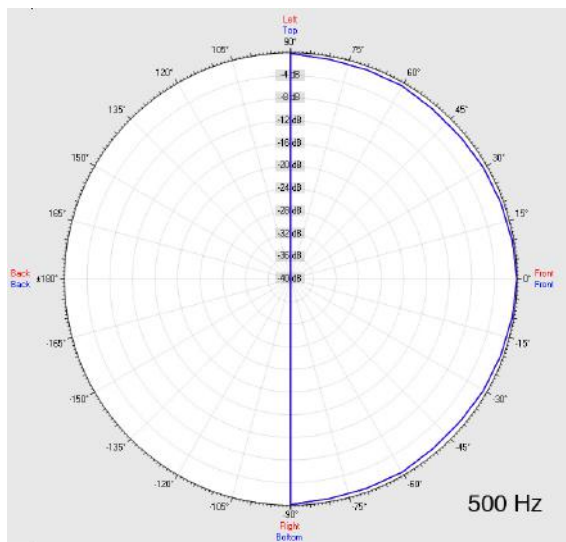
TECHNICAL DATA	CLB-220FT/EN5424
Loudspeaker:	165mm - broadband
Power-Consumption:	100V-6-3-1,5W
Frequency-Range:	70-18 000 Hz
EN-Sensitivity 1W/4M:	79,5 dB
SPL max 6W/4M:	89,6 dB
SPL 1W/1M max. EASE/Ulysses:	106,8 dB
SPL 6W/1M max. EASE/Ulysses:	112,8 dB
Radiation H (0,5/1/2/4KHz):	180°/180°/100°/50°
Radiation V (0,5/1/2/4KHz):	180°/180°/100°/50°
Dimension:	220 mm x 115 mm with firedome
Ceiling Cut-out:	200 mm
Suitable slab thickness:	1 mm - 35 mm
Weight:	ca. 1,5 kg
Material:	Metal
Color:	white
Certificate-Nr.:	1293-CPR-0620
Order-Nr.:	CLB-220FT/EN5424

- Two-part design via bayonet mounting
- Three touch-secure 100V-tappings
- Ceramic clamp & thermal fuse by request

**CLB-220FT/EN5424**

EN 54-24 Ceiling-Speaker  
in Metal with 6 Watt Power

## Radiation



Test method	Axis	500 Hz	1000 Hz	2000 Hz	4000 Hz
EN 54-24	HOR	180°	180°	100°	50°
EN 54-24	VER	180°	180°	100°	50°
EASE/Ulysses	HOR	180°	180°	100°	50°
EASE/Ulysses	VER	180°	180°	100°	50°

# CLB-220FT/EN5424

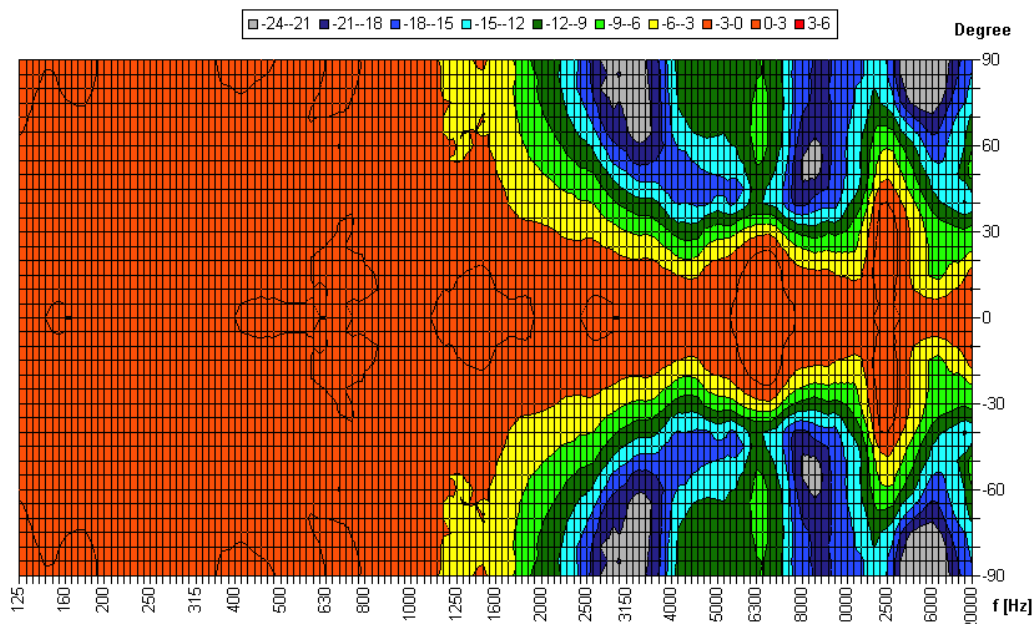
EN 54-24 Ceiling-Speaker  
in Metal with 6 Watt Power



Elektroakustische Komponenten

## Isobar-Diagramm

Horizontal Isobars of: Elko-Schmid CLB-220F



Parameters: Cyclic Move: 0° ; Symmetry: 0..+180 sym ; Freq.Smooth: 1/3 Oct ; Ang.Resol.: 5° ; Rel. to: 0° Axis 0°

CE

1293

Elko Schmid GmbH & Co. KG  
Glauchauer Str. 30, D-08058 Zwickau

10

DoP: 498058129314-ICS-PN-0001

EN 54-24

Loudspeaker for voice alarm systems for  
fire detection and fire alarm systems for buildings

CLB-220FT/EN5424

Intended Option:  
Type A