

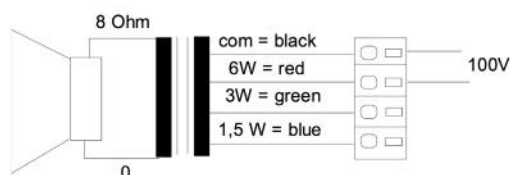
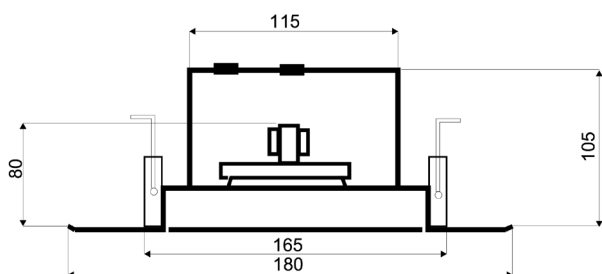
CLB-180FT/EN5424

EN 54-24 Ceiling-Speaker
in Metal with 6 Watt Power

EN
54-24

**TECHNICAL DATA****CLB-180FT/EN5424**

| | |
|------------------------------|-------------------------------|
| Loudspeaker: | 120mm - broadband |
| Power-Consumption: | 100V-6-3-1,5W |
| Frequency-Range: | 80-15 000 Hz |
| EN-Sensitivity 1W/4M: | 74,5 dB |
| SPL max 6W/4M: | 84,0 dB |
| SPL 1W/1M max. EASE/Ulysses: | 96,8 dB |
| SPL 6W/1M max. EASE/Ulysses: | 104,8 dB |
| Radiation H (0,5/1/2/4KHz): | 160°/150°/80°/32° |
| Radiation V (0,5/1/2/4KHz): | 160°/150°/80°/32° |
| Dimension: | 180 mm x 105 mm with firedome |
| Ceiling Cut-out: | 165 mm |
| Suitable slab thickness: | 1 mm - 35 mm |
| Weight: | 1,1 kg |
| Material: | Metal |
| Color: | white |
| Certificate-Nr.: | 1293-CPD-0245 |
| Order-Nr.: | CLB-180FT/EN5424 |

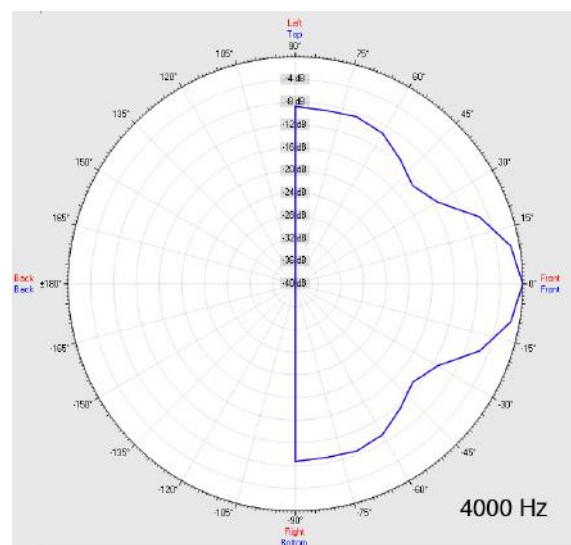
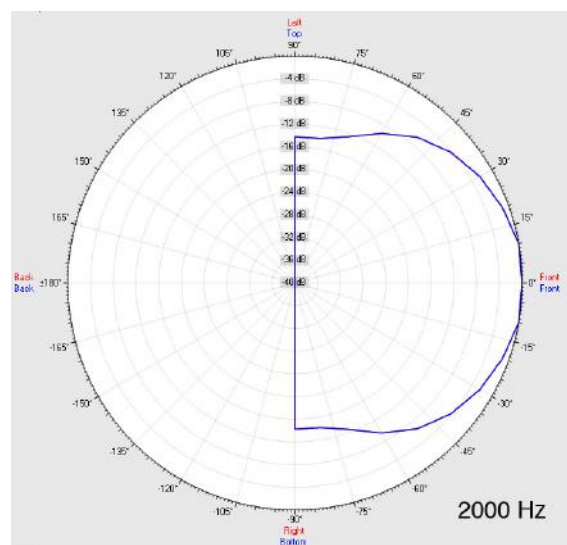
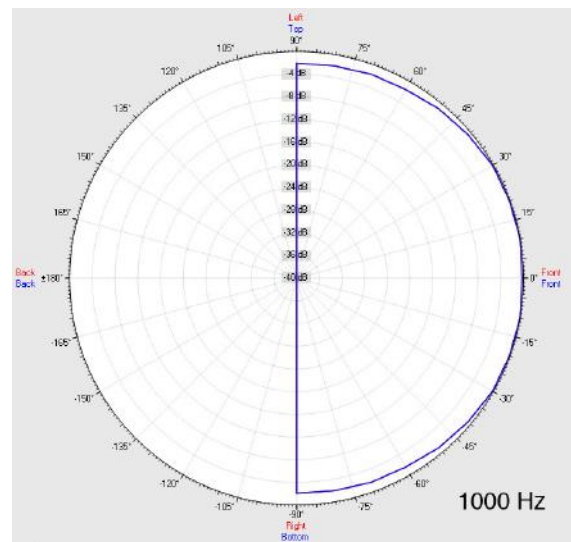
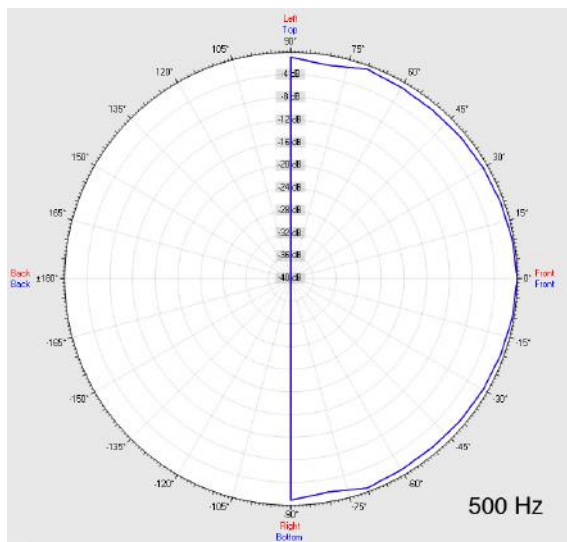


- Two-part design via bayonet mounting
- Three touch-secure 100V-tappings
- Ceramic clamp & thermal fuse by request

CLB-180FT/EN5424

EN 54-24 Ceiling-Speaker
in Metal with 6 Watt Power

Radiation



| Test method | Axis | 500 Hz | 1000 Hz | 2000 Hz | 4000 Hz |
|--------------|------|--------|---------|---------|---------|
| EN 54-24 | HOR | 160° | 150° | 80° | 32° |
| EN 54-24 | VER | 160° | 150° | 80° | 32° |
| EASE/Ulysses | HOR | 180° | 180° | 180° | 60° |
| EASE/Ulysses | VER | 180° | 180° | 180° | 60° |

CLB-180FT/EN5424

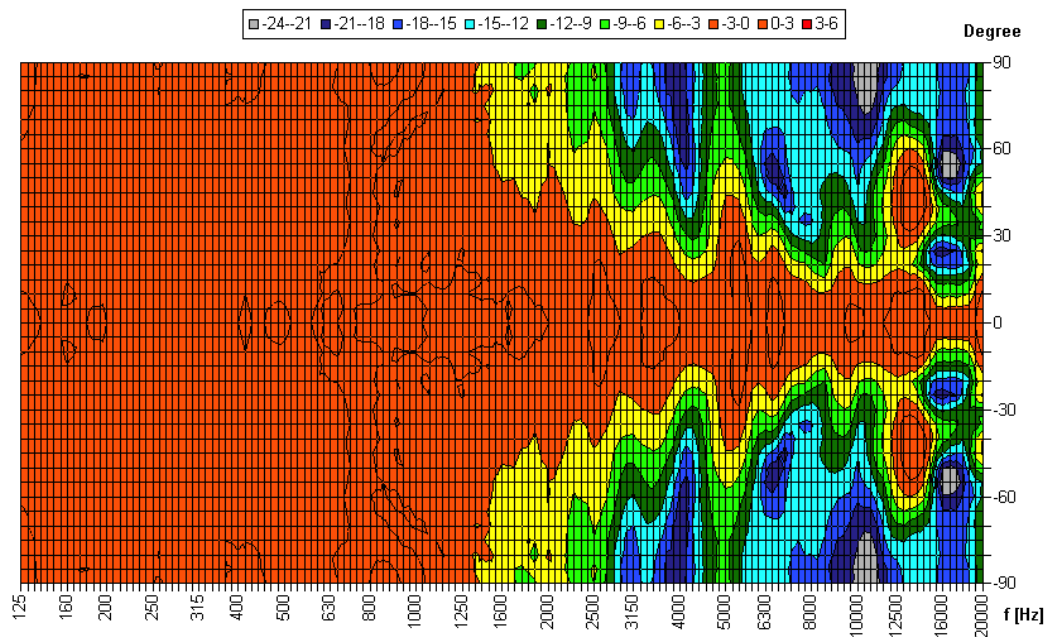
EN 54-24 Ceiling-Speaker
in Metal with 6 Watt Power



Elektroakustische Komponenten

Isobar-Diagramm

Horizontal Isobars of: Elko-Schmid CLB- 180 FT



Parameters: Cyclic Move: 0° ; Symmetry: 0..+180 sym ; Freq.Smooth: 1/6 Oct ; Ang.Resol.: 5° ; Rel. to: 0° Axis 0°

CE

1293

Elko Schmid GmbH & Co. KG
Glauchauer Str. 30, D-08058 Zwickau

11

DoP: 498058129314-ICS-PN-0001

EN 54-24

Loudspeaker for voice alarm systems for
fire detection and fire alarm systems for buildings

CLB-180FT/EN5424

Intended Option:
Type A